

|                                       |   |                             |                             |
|---------------------------------------|---|-----------------------------|-----------------------------|
| Type<br><b>Coffee Vending Machine</b> | Model<br><b>9100</b>                            | T.I. NO<br><b>05 - 2017</b> |                             |
| Serial Number<br><b>71412564</b>      | Subject<br><b>NEW "ON / OFF" SWITCH SUPPORT</b> | ISSUED FOR (X)              | Action Information <b>X</b> |

## Modifications

Be informed that the **pre-modification** "ON / OFF switch support" has been replaced by a **new** "ON / OFF switch support".

The **new** support is a plastic molded part; the **pre-modification** support is a sheet – metal part.

**New** "ON – OFF" switch support

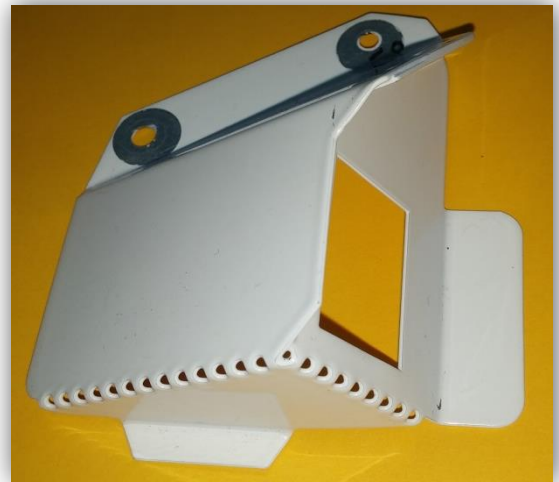
Spare code: **260956**

**Pre-modification**

"ON – OFF" switch support

Spare code: **259704**

The code is no longer available



**New support** +

"double - pole switch"

**Pre-modification support** +

"double - pole switch"



**Double - pole switch**

Spare code not changed: **0V3200**

|                                       |   |                             |                       |                                     |
|---------------------------------------|---|-----------------------------|-----------------------|-------------------------------------|
| Type<br><b>Coffee Vending Machine</b> | Model<br><b>9100</b>                            | T.I. NO<br><b>05 - 2017</b> |                       |                                     |
| Serial Number<br><b>71412564</b>      | Subject<br><b>NEW "ON / OFF" SWITCH SUPPORT</b> | ISSUED<br>FOR (X)           | Action<br>Information | <input checked="" type="checkbox"/> |

➤ *Machines concerned by this modifications from S/N:* **71412564**

### Exchangeability

The **new "ON – OFF" switch support** can be installed in the machines prior to the SN above.

The **new support** spare code is: **260956**

The **pre-modification support** spare code is: **259704**

The **pre-modification support** spare code is no longer available.