

Type <b>Coffee Vending Machine</b>	Model <b>OPERA TOUCH</b>	N° T.I. <b>05_2023</b>
Serial Number <b>31921663</b>	Subject <b>CPU BOARD MODIFICATION</b>	

**REASON:**

*Wi-Fi and Bluetooth chip available again*

**MODIFICATIONS:**

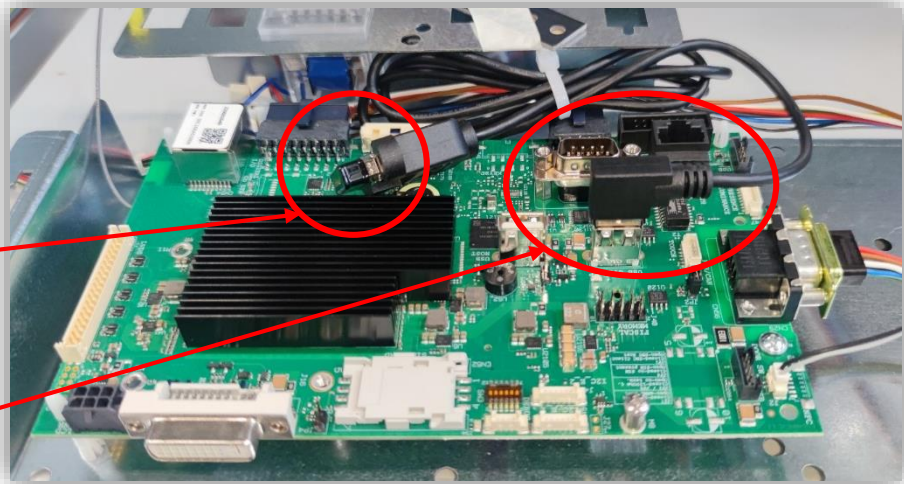
Introduction of a new CPU board with integrated *Wi-Fi and Bluetooth* chip

**Pre – modification** CPU board (no Wi-Fi /BT chip) with Dongle and Extension

**Pre – modification** CPU board  
Spare code: **265669**

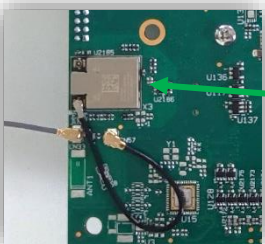
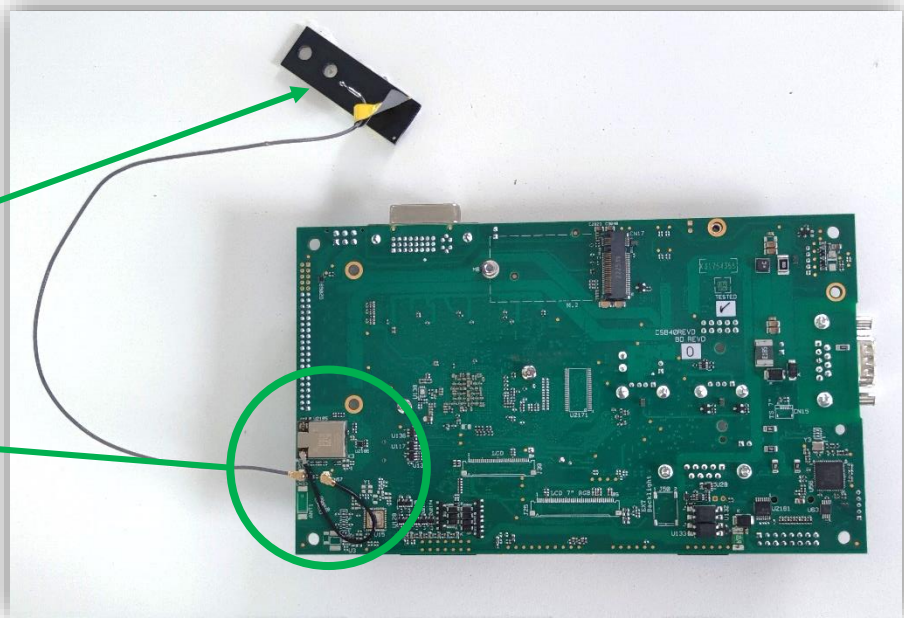
**USB Wi-Fi / BT Dongle**  
Spare code: **265617**

**USB extension 100 cm**  
Spare code: **265618**



**New** CPU board  
(with Wi-Fi / BT chip)  
Spare code: **266090**

**Wi-Fi / BT aerial**  
(not supplied with CPU board)  
Spare code: **261292**



**Wi-Fi / Bluetooth chip**



Type <b>Coffee Vending Machine</b>	Model <b>OPERA TOUCH</b>	N° T.I. <b>05_2023</b>
Serial Number <b>31921663</b>	Subject <b>CPU BOARD MODIFICATION</b>	

➤ *Machines concerned by modification from S/N:* **31921663**

**EXCHANGEABILITY:**

For machines prior to above S/Ns, if it is necessary to replace the CPU board, the **new** CPU board must be used, spare code **266090**.

The **new** CPU board can run only with the SW *Application Key 2* below:

➤ Opera Touch: **Key 2** rev. **1.12.23** or later.

These SW *Application Key 2* versions are also compatible with the **pre – modification** CPU board, spare code **265669**. Therefore, if you want to update the machines SW, without replacing the CPU board, (keeping the **pre - modification** CPU in the machine) you can do it without any additional action.

The SW *System Key 1* update to the latest revision, rev. **1.1.13-2** or higher it is not mandatory for the CPU board running, but it is always advisable.

The **pre - modification** CPU board (spare code **265669**) will be out of stock.

The USB **dongle**, spare code **265617**, and the USB **extension**, spare code **265618**, will be available.