

Type Coffee Vending Machine	Model 9100	N° T.I. 01 - 2023
Serial Number 30720414	Subject MODIFICATION of the Boiler EV Support BRACKET	ISSUED FOR (X) Action <input type="checkbox"/> Information <input checked="" type="checkbox"/>

REASON:

Be informed that with the aim to reduce stress on the *EV assembly* during transportation

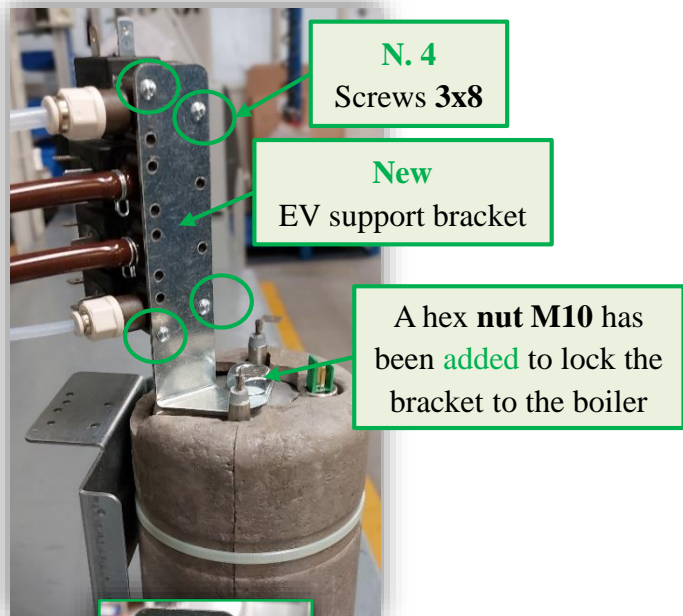
MODIFICATIONS:

A **new boiler EV support bracket** has been introduced to replace the **pre-modification** one.

The **new** EV support **bracket** is fixed to Boiler assembly by means of a *hex nut M10*.

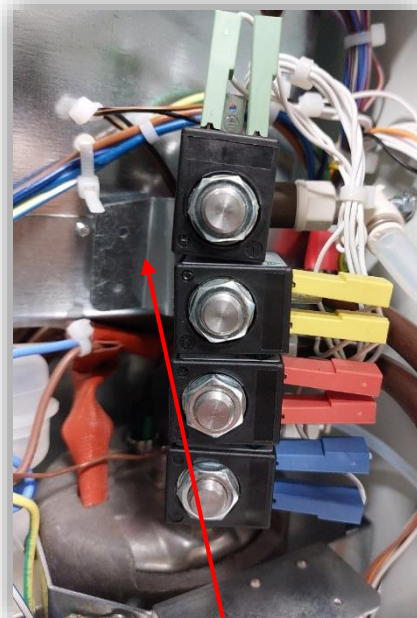
The EV is fixed to bracket by means **4 screws 3x8**.

New Boiler assembly (detail)
with **new** EV support bracket



New EV support **bracket**
Spare code: **264694**

Pre-modification Boiler assembly
(detail)



Note: only on models with 2 grinders (2B2C).
The **bracket** was used to direct the *solenoid valves* and not to support them

New EV support **bracket** guarantees both support and proper orientation of solenoid valves



Type Coffee Vending Machine	Model 9100	N° T.I. 01 - 2023						
Serial Number 30720414	Subject MODIFICATION of the Boiler EV Support BRACKET	<table border="1"> <tr> <td>ISSUED</td> <td>Action</td> <td></td> </tr> <tr> <td>FOR (X)</td> <td>Information</td> <td>X</td> </tr> </table>	ISSUED	Action		FOR (X)	Information	X
ISSUED	Action							
FOR (X)	Information	X						

➤ **Machines concerned by modification from S/N 30720414**

EXCHANGEABILITY:

For machines previous to S/N 30720414 it is possible to mount the **new bracket** with hex **nut** and **4 screws**, as described before (page 1 / 2).

- **New EV support bracket** spare part code: **264694 / SAP 55126155**
- Hex **nut M10** spare part code: **258998 / SAP 55116537**
- **Screw 3x8** spare part code: **987628 / SAP 55118494**