

T.I. no.: 2017 - 02 Updated: -	Topic: Ball for brewing unit piston output
---	---

Date: 27/2/2017	Priority	Need for action
Affected machines: SCA P BF	High	As soon as possible
From serial number: -	X Medium	X On next visit to the machine
As of date: Immediately	Low	FYI only

SOLUTION TO THE PROBLEM

The ball [063099] prevents water from flowing back from the piston output of the brewing unit. This keeps the ground coffee slide dry.

TABLE OF CONTENTS

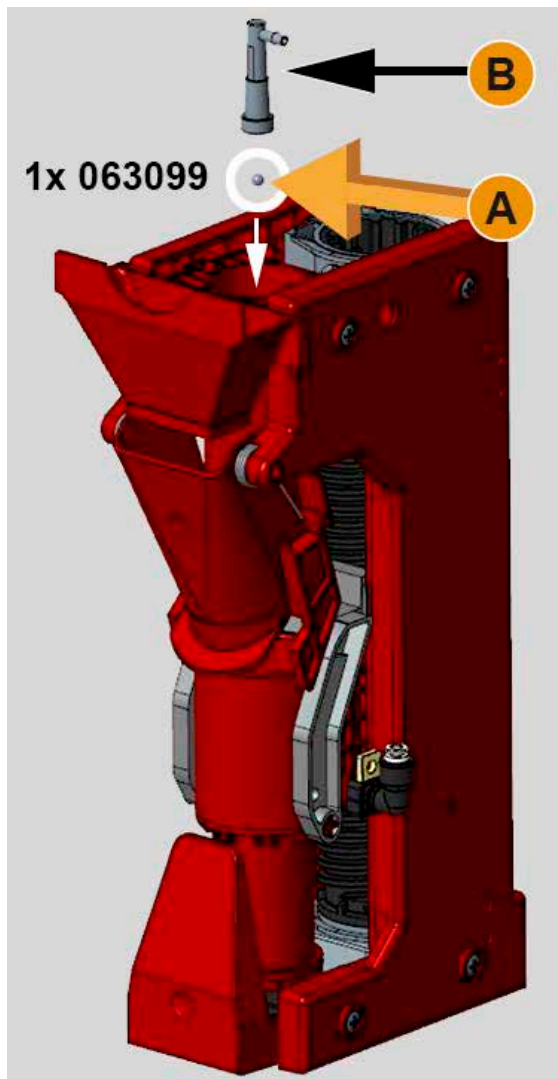
Solution to the problem	1
Required time	2
Overview of the site of installation	2
Dismantling	3
Installation and mounting	3

REQUIRED TIME

The time required for installing the ball is about 10 minutes.

OVERVIEW OF THE SITE OF INSTALLATION

The ball [036710] is inserted in the upper piston output of the brewing unit, see figure below.



- [A] Ball 063099
- [B] Piston output hose connection

DISMANTLING

- ▶ Switch off the machine.
- ▶ [1] Remove both bean hoppers and the upper housing section by removing the four I-6k screws, size 3.
- ▶ [2] Loosen I-6k flat-head screw, size 4 from the retaining plate and remove the plate.
- ☑ This exposes hose connection [B].
- ▶ [3] Remove hose connection [B] from the piston output of the brewing unit by lifting it up.



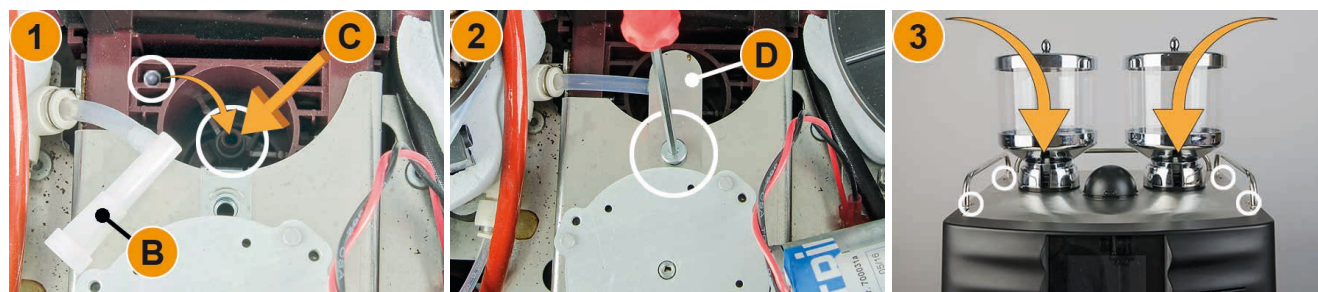
INSTALLATION AND MOUNTING

- ▶ [1] Carefully set the ball on the piston output [C].



There is a risk of knocking the ball off the support position. The ball would then fall into the poorly-accessible brewing unit. That is why it's important to be very careful when setting the hose connection on the piston output with the ball positioned.

- ▶ [1] Carefully place hose connection [B] onto the piston output over the positioned ball.
- ▶ [2] Position the retaining plate [D] onto the hose connection with the I-6k flat-head screw, size 4.
- ▶ [3] Install the housing section by fastening the four I-6k screws, size 3.



- ▶ Reinsert the bean hopper.
- ▶ Switch on the machine.

(EN) This page is intentionally left blank.

(DE) Diese Seite wurde absichtlich frei gelassen.

(FR) Cette page est laissée vide intentionnellement.

(ES) Esta página se dejó en blanco intencionalmente.