

T.I. no.: 2017 - 23 Updated: -	Topic: Schaerer Barista Software 1.6.1
--	---

Date: 06.11.2017	Priority	Need for action
Affected machines: Schaerer Barista	High	As soon as possible
From serial number: -	X Medium	X On next visit to the machine
As of date: -	Low	FYI only

TABLE OF CONTENTS

New functions and improvements	1
Individual deactivation of defective brewing groups	1
Beverage names in the counter menu	2
Restoration of previous software version	3
Load factory data -> Cold water inductor calibration	3
Portafilter insertion animation	3
Scroll bar when loading data backups	3
Combined steam boiler/DLE descaling routine	3
Descaling	4
Introduction	4
Carrying out the descaling procedure	4
Additional work	12

NEW FUNCTIONS AND IMPROVEMENTS

The following is an overview of the improvements:

New functions:

- Individual deactivation of defective brewing group
- Combined steam boiler/DLE descaling routine
- Restoration of previous software version

Improvements:

- Beverage names in the counter menu
- Load factory data -> Cold water inductor calibration
- Portafilter insertion animation
- Scroll bar when loading data backup

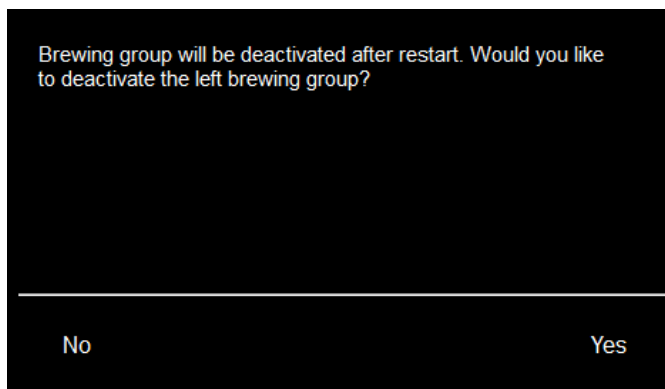
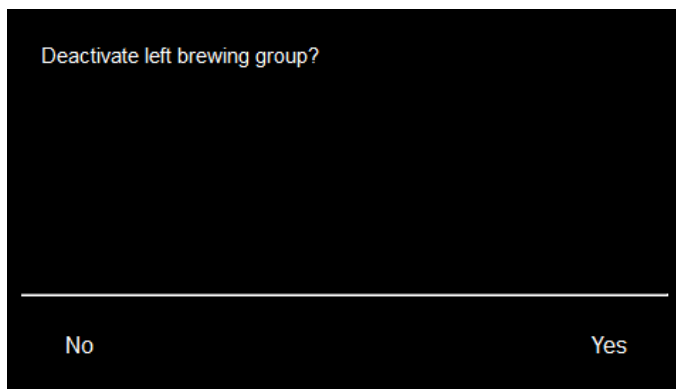
Individual deactivation of defective brewing groups

Up to now, a hard defect of, for example, the left brewing group meant that the machine could no longer be operated even though the right brewing group was still functioning completely.

With the new software, if a defect is detected (e.g. standardisation error, excessive current error, etc.) on a brewer/brewer drive, the "Switch machine off and back on" display message appears as before. If the error occurs immediately after switching the machine back on, an automatic query appears asking whether the effected brewing group should be switched off.

The advantage here is that the customer can continue to operate the machine with the still-functioning brewing group up until the necessary service call.

Display messages in the event of a defect (example with left brewing group):



Only the functioning brewing group is available after the restart.



If a brewing group is deactivated as described above, this deactivated brewing group is not available until it is reactivated through the system menu.

System > Settings > Activate left brewing group

After confirming that the brewing group is to be activated again and an automatic restart, both brewing groups are again available, provided that the defect has been fixed.

Beverage names in the counter menu

With the new software, the beverage names are now displayed in full form in the accounting system menu. Up to now, the beverage names were shortened in this menu, which is why it was difficult to differentiate then and read off the counters.

	1	2	3	4
2 Café Crème	1	1	1	1
2 Ristretto XL	1	1	1	1
2 Lungo XL	1	1	1	1
2 Crème Small XL	1	1	1	1
Espresso	8	8	8	8

Restoration of previous software version

After a machine software update, the software status can be restored 1:1 as it was before the update using the Restore function. This function can be started up to 30 days after the software update; after that point, restoration is no longer possible since the restoration file created in the machine for this purpose is no longer available.

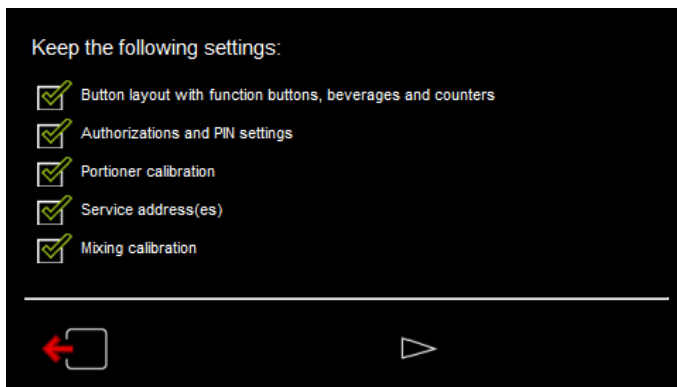
The prerequisite for this function is that the machine was operated with machine version 1.5.1 or 1.5.3 before the update to version 1.6.1.

Service > Service routines > Restoration

Load factory data -> Cold water inductor calibration

If factory data is loaded, the set value of the cold water inductor calibration can be adopted with the new software. Up to now, after loading the factory data, the inductor had to be recalibrated since the set values are overwritten with the factory data.

Service > Machine data > Standards > Factory -> Service/Customer



Portafilter insertion animation

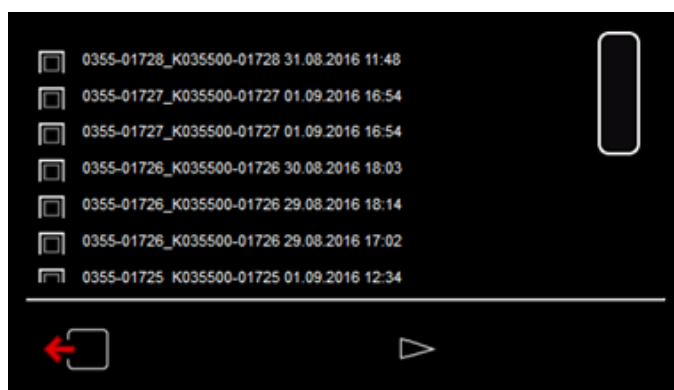
The portafilter insertion animation has been optimised. If the portafilter is inserted by the operator, with the new software the animation immediately stops and the brewing group is again ready for use.

Up to now, the animation was always shown to the end, regardless of whether the portafilter was already inserted.

Scroll bar when loading data backups

If there are several data backup files on the USB stick for loading the data backup, the list of available data backup files can be searched using the scroll bar with the new software.

Up to now, only the last 7 data backup files were shown on the display.



Combined steam boiler/DLE descaling routine

The descaling of the steam boiler including continuous flow heater has been re-enabled with this software. See the following chapter "Descaling" in this technical information.

DESCALING

Introduction

The steam boiler descaling routine is combined descaling of the steam boiler and the continuous flow heater. This routine lasts about 100 minutes and running it once a year is recommended. After starting the display-guided descaling routine, 300 g of descaling product (075106) or 4 bottles of Calcpure (062869) must be added to the 5 litre descaling canister. This must be then filled with hot water using the filling hose, which is to be connected to the hot water outlet.

After the machine has switched off, the hose kit from the descaling set must be installed in the machine. The descaling routine is then continued after the machine has been switched back on. First the continuous flow heater and then the steam boiler must be filled with descaling liquid via the installed hose kit.

After several phases, the continuous flow heater and the steam boiler are rinsed and the saturated solution is guided out of the machine through the drain using the hose kit. After the last rinsing phase of the steam boiler at the end of the descaling process, the machine switches off so that the hose kit can be removed and other maintenance work can be done on the machine. This has the advantage that the machine is still free of pressure and cooled off, meaning work can be done on the machine without danger after the mains plug has been disconnected and the stop cock has been closed.

Carrying out the descaling procedure

Instructions for the descaling procedure follow. Always follow the instructions on the display; additions are also visible below the writing.

Required material:

- Descaling set 33.2934.0000 (1, 2 and 3)
- 2x blind nipples 060544 (4)
- 1x straight plug-in connector 072879 (5)
- Teflon hose 067760



⚠ CAUTION!

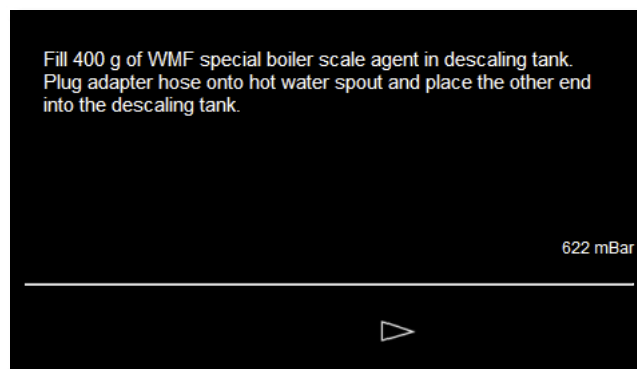
Risk of irritation and burns!
During descaling, descaling solution flows out of the brewing groups and the hot water outlet.

Never grip under the outlets during descaling.





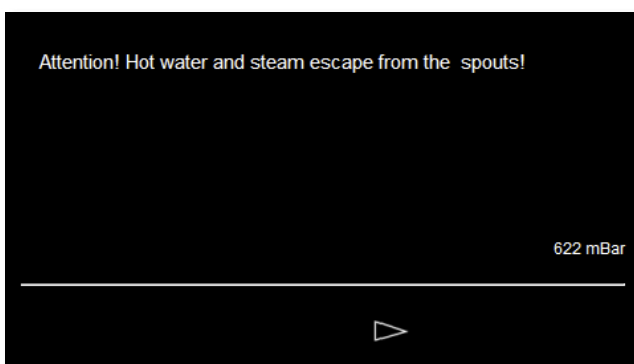
- The hand pump and screw cap are delivered separately and must be assembled. The sequence is visible in the picture.



- ▶ Prepare descaling.
- ▶ Fill 300 g of Schaerer descaling product (075106) or 4 bottles of Calcpure (062869) into the descaling canister.
- More than 300 g of Schaerer descaling product will not completely dissolve.

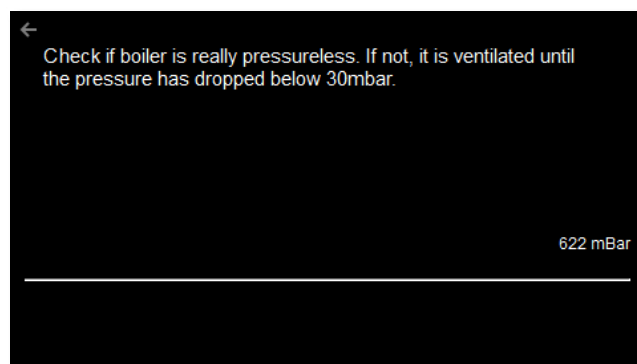


- ▶ Remove hot water outlet and connect the grey adapter hose to the hot water outlet of the machine and insert into the descaling canister.
- If Calcpure (4 x 750 ml) is used, the descaling canister is not big enough! Keep another container handy.



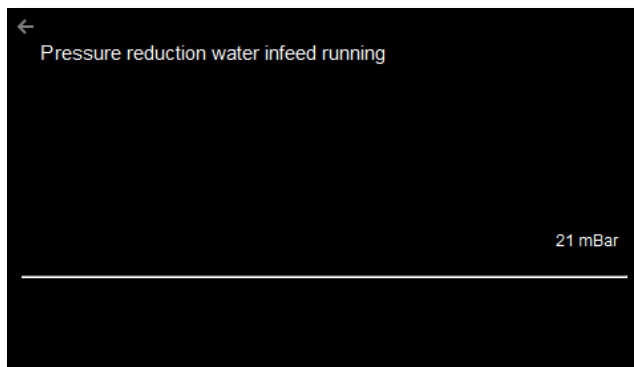
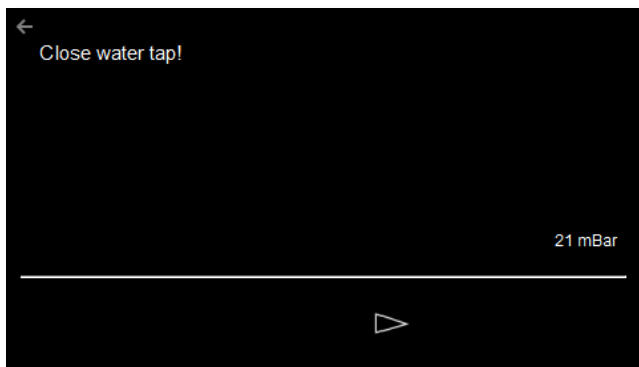
- ⚠ Attention! - Hot water flows out the hot water outlet into the descaling canister.

- The descaling canister is 5 l. 3-5 l are output during descaling.



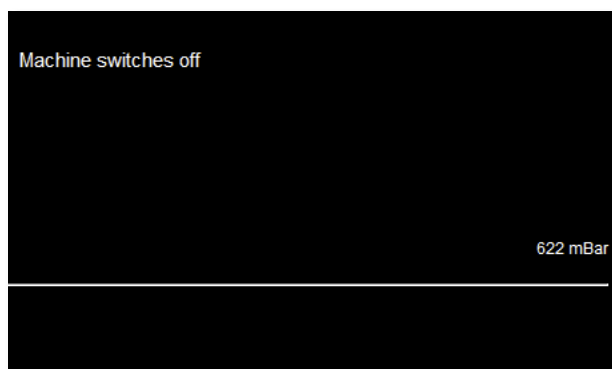
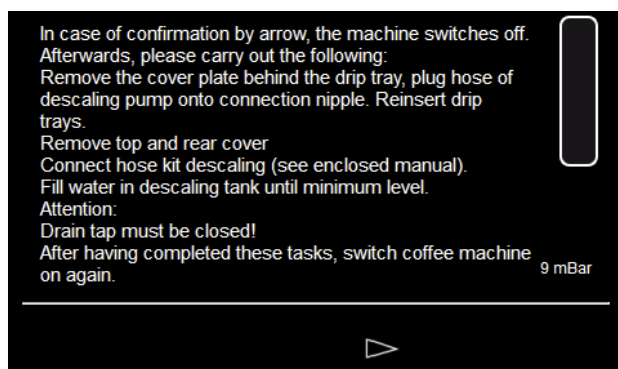
- ⚠ Attention! - Hot water flows out of the hot water outlets and out of the brewing groups

- ▶ If the canister is full, screw on the cover and shake it so the descaling product dissolves thoroughly
- ▶ Fill descaling canister with hot water up to the minimum mark.

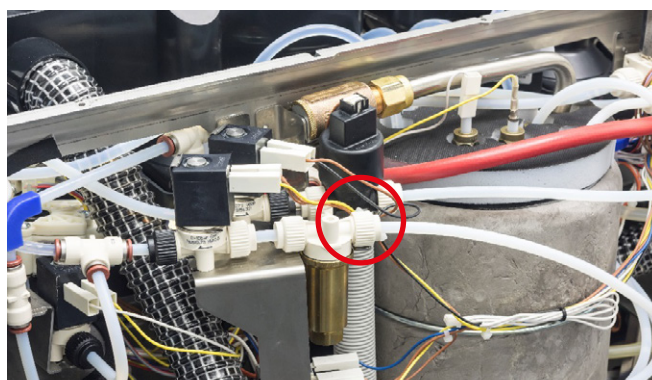


- About 12 min. from start to this step.

- The residual pressure in the system builds up.
- - Hot water flows out of both hot water outlets and the brewing groups.



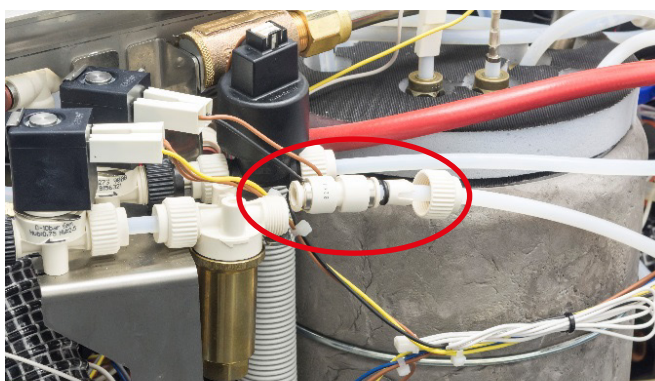
- After confirming this step, the machine switches off so that the following steps can be carried out.



- ▶ Connect descaling canister to the descaling connection on the machine.

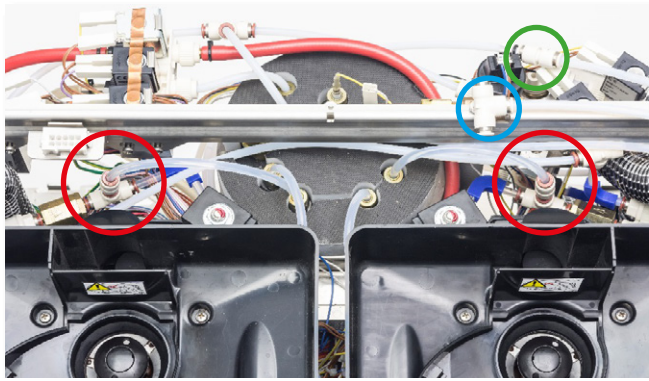
- ▶ Disconnect the hose from the water filter at the rear end of the machine.

- Caution! Do not lose O-ring.

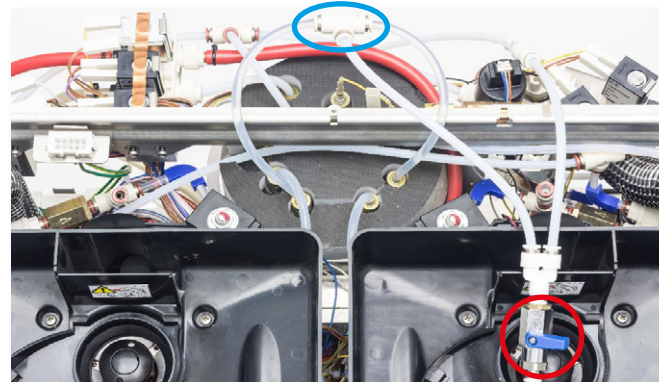


- ▶ Connect the plug-in connector (072879) to the hose.

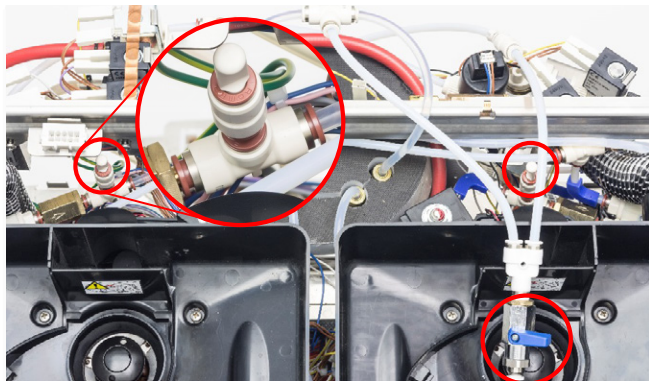
- ▶ Then connect the plug-in connector to the hose from the hose kit.



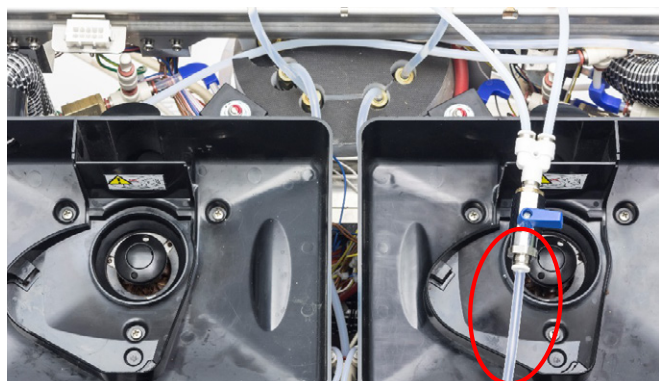
- ▶ Disconnect the hoses from the continuous flow heater.
- ▶ Connect the hoses with the T-connector (blue circle) from the hose kit, which is already connected to the hose of the water filter (green circle) at this time.



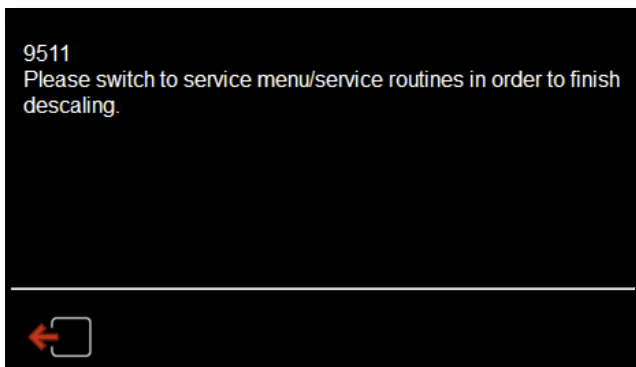
- ▶ Connect hoses of the continuous flow heater to the T-connector from the hose kit (blue circle).
- ▶ Ensure that the stop cock is closed.



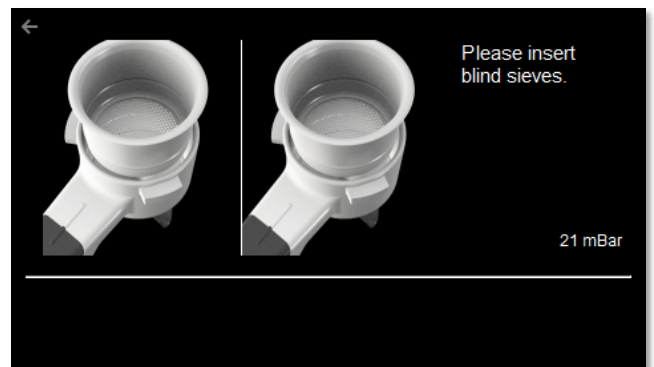
- ▶ Position the two blind nipples (060544) on the marked plug-in connectors.
- ▶ Ensure that the stop cock is closed.



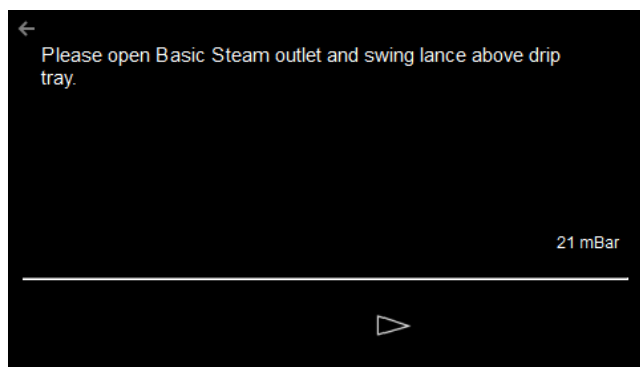
- ▶ Connect the Teflon hose (067760) to the hose kit.
- ▶ Place the other end of the hose in the drip tray. Fasten with a cable tie.
- Stop cock remains closed.



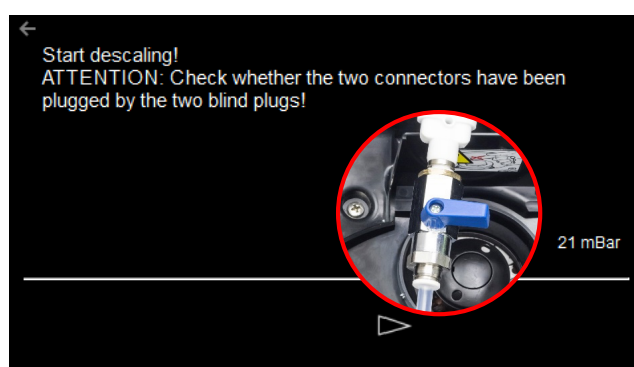
- ▶ Restart the service routine: Descale steam boiler.



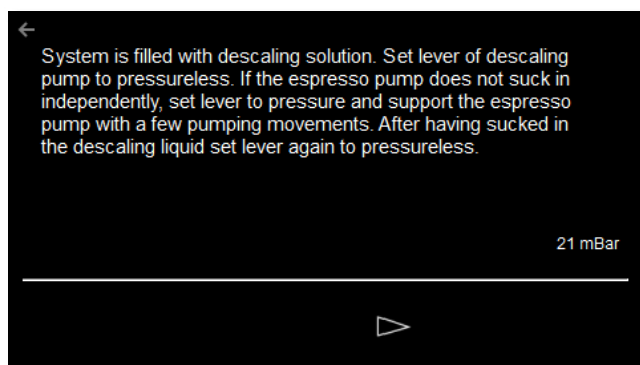
- ▶ Place blind sieves in both portafilters so that the relief lines can be descaled.



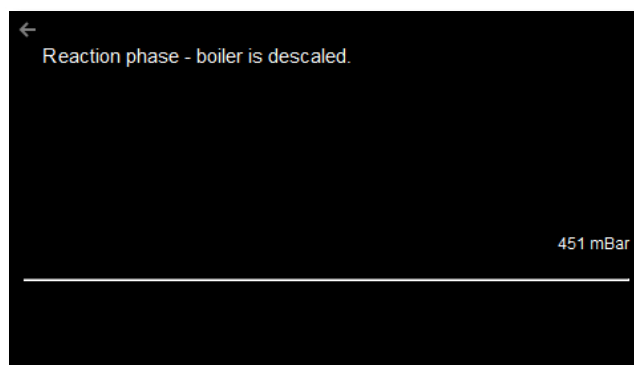
- ▶ Position both steam wands under the drip tray.
- ▶ Open the Powersteam knob (turn anti-clockwise)



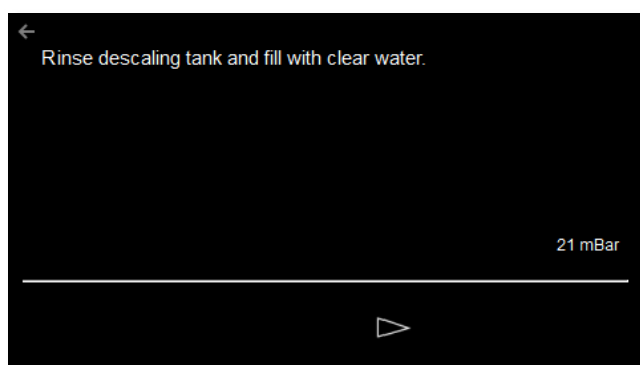
- ▶ Water pipe remains closed.
- ▶ Hose kit drain remains closed.



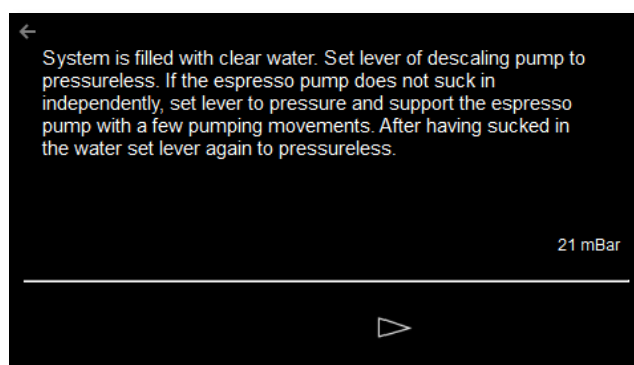
- ▶ If the espresso pump does not completely suck up the descaling liquid from the descaling canister, build up pressure with the hand pump. First close the red pressure switch, then open it.



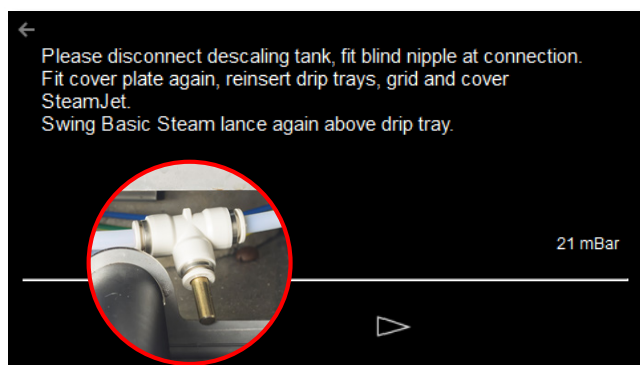
- Boilers are descaled. Duration about 20 min.
- Other work can be done during descaling (see "Additional work" in the next section).



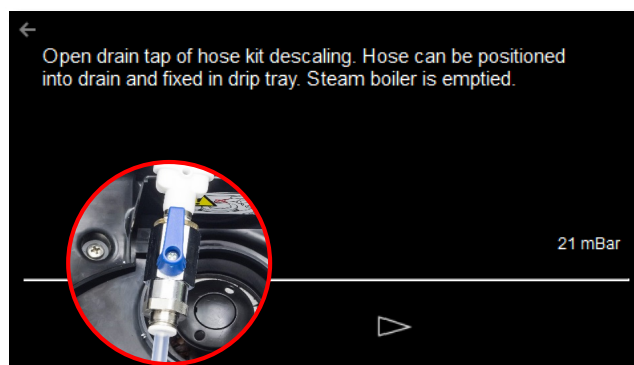
- ▶ Empty and rinse the descaling canister.
- ▶ Fill with cold drinking water and reconnect.



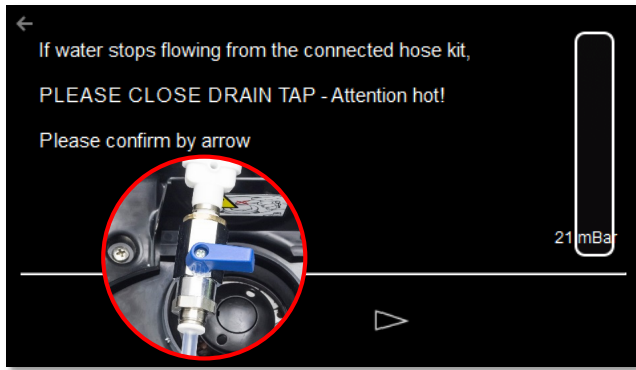
- ▶ If the espresso pump does not completely suck up the drinking water from the descaling canister, build up pressure with the hand pump. First close the red pressure switch, then open it.



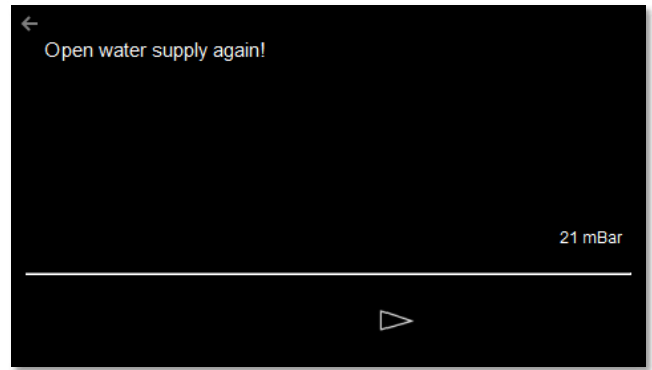
- ▶ After positioning the drip tray and drip grid, ensure that both steam wands are positioned over the drip tray.



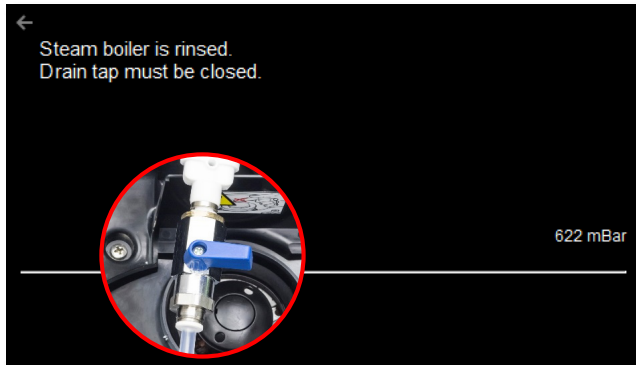
- The air pump runs during this process.
- Water comes out of both steam wands.



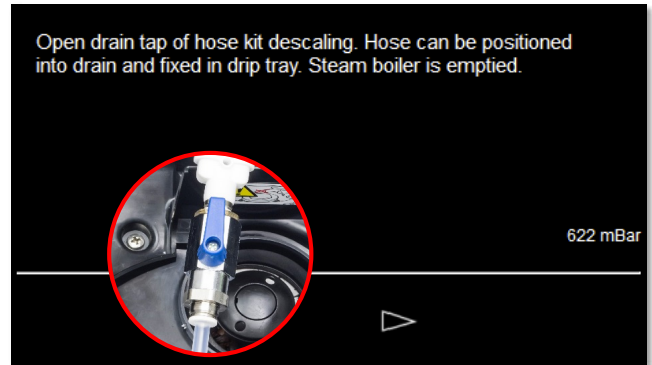
- Close stop cock - careful: Hot!
- Water drain remains closed.



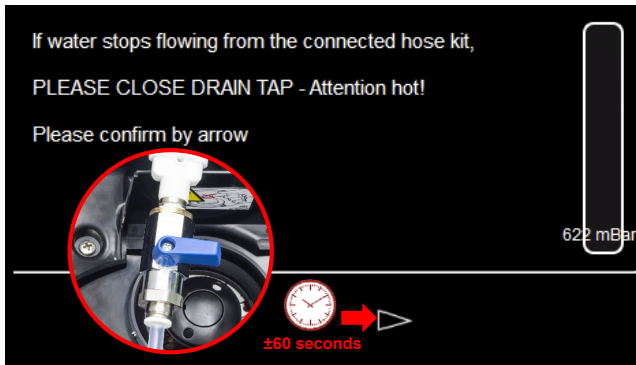
- ▶ Open water drain.



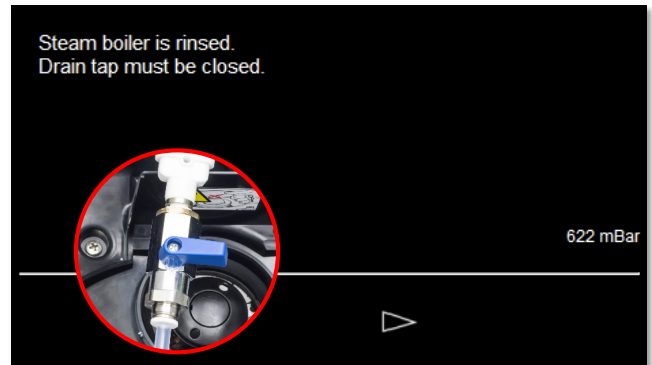
- The boiler is rinsed with about 40 l of water - this takes a relatively long time.
- Water comes out of the steam wands.



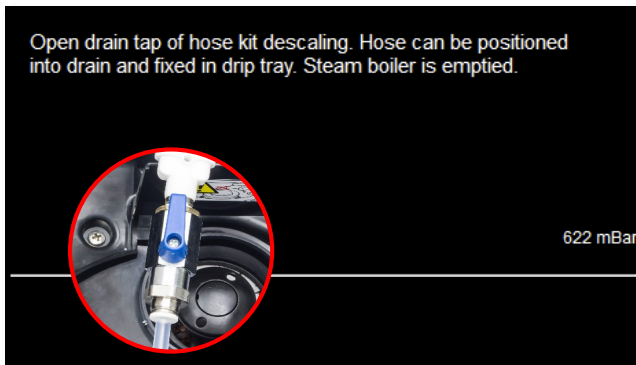
- The air pump runs during this process.
- The stop cock must be open.



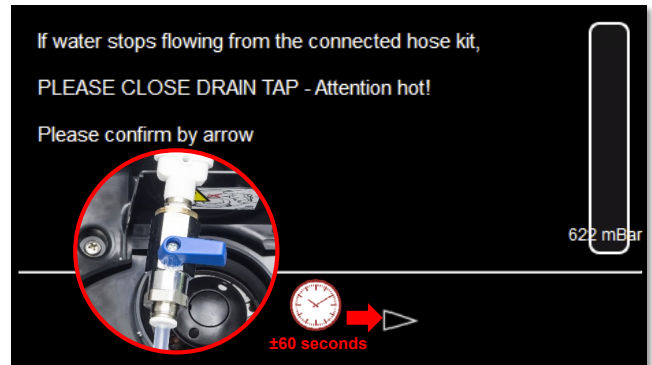
- Confirm after about 60 s with [Next]. The water continues to flow since the stop cock is still open!



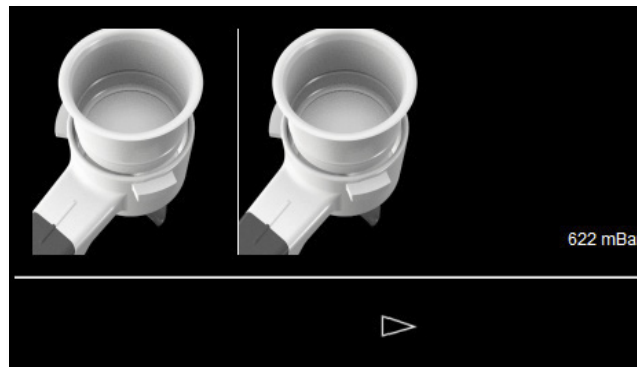
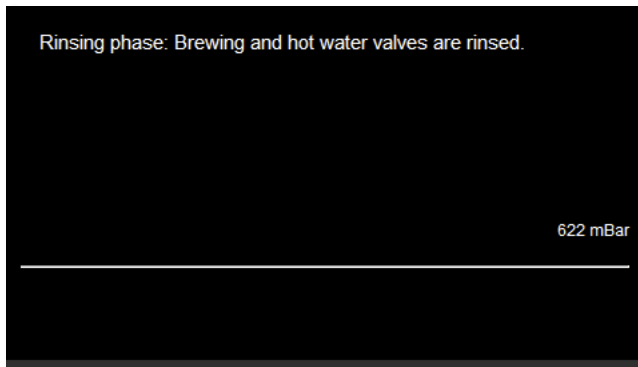
- ▶ Close stop cock.



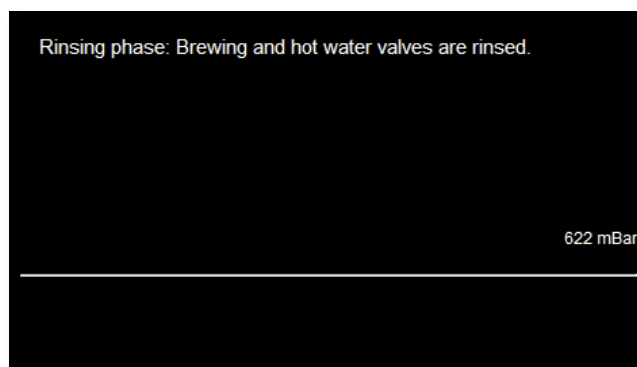
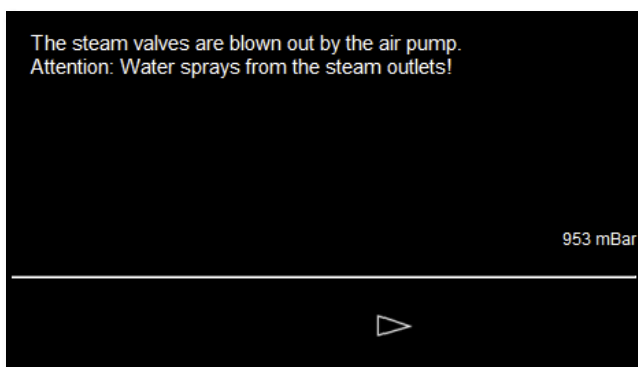
- ▶ Open stop cock




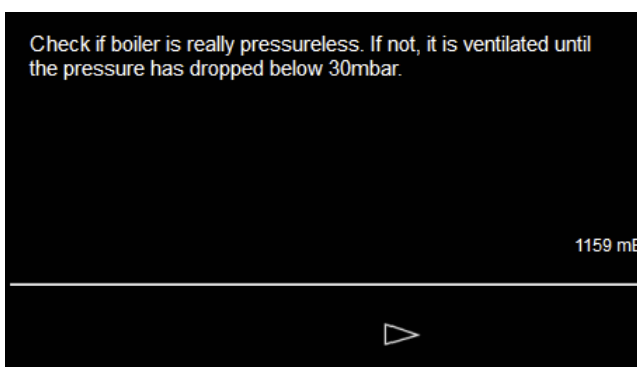
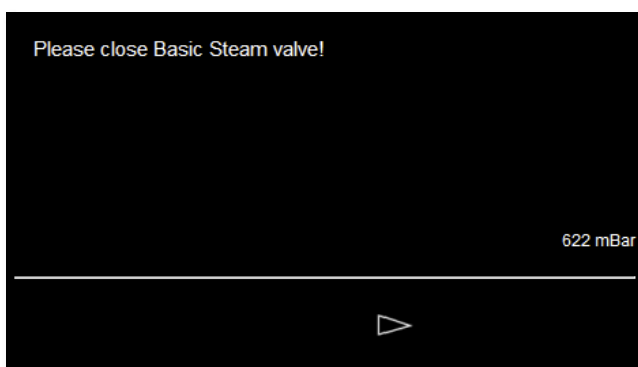
- Confirm after about 60 s with [Next]. The water continues to flow since the stop cock is still open!



- ▶ Remove the blind sieve from the portafilter and insert the brewing sieve.
- ▶ Insert portafilter.
- Attention! Water comes out of the portafilter after confirming with [Next].

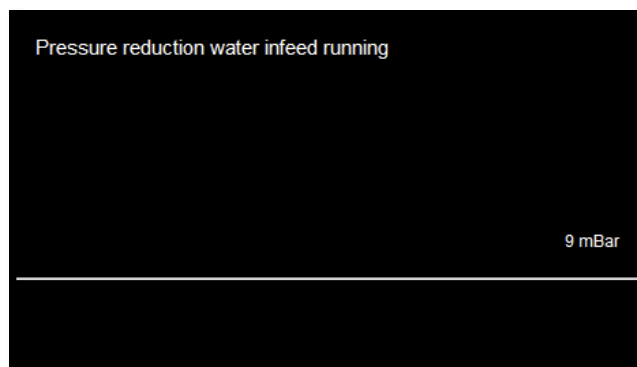


 Attention! Water sprays out of the steam wands.



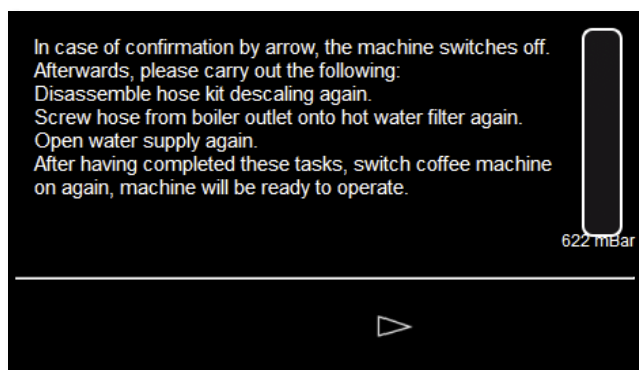
- ▶ Close the Powersteam knob (turn clockwise)

- The boiler is relieved until the pressure is under 30 mBar.



- Close water drain.

- The residual pressure in the water system is released.



- ▶ Remove hose kit - assemble machine to the original state.
- ▶ Open water drain, unless other maintenance work is planned.

Additional work

The following work can be carried out while the descaling process is being run.



- ▶ Remove and disassemble the hot water sieve for cleaning and descaling.
- Water filter complete 33.2849.7000
- ▶ Clean brass housing and base, leave in descaling liquid for a short time if necessary.
- ▶ Replace reducer, O-ring (slightly greased with Molikote) and water sieve with new parts.



Water filter sieve
33.1509.2000



Water filter O-ring
33.2283.2000



Reducer
33.2354.1000



- ▶ Remove and disassemble the HW output adapter piece with a 15 mm open-end wrench.
- ▶ Clean the HW outlet adapter piece with the 3 sieves, put into descaling liquid for a short time if necessary.