

T.I. no.: 2018 - 06 Updated: -	Topic: SC Soul Software 3.0.2
--	--------------------------------------

Date: 28.03.2018	Priority	Need for action
Affected machines: SC Soul	High	As soon as possible
From serial number: 1813.../	X Medium	X On next visit to the machine
As of date: -	Low	FYI only


NEW FUNCTIONS AND IMPROVEMENTS


The following is an overview of the new functions:


New functions:

- If an error is detected while machine is starting up, the service menu is displayed directly. If the machine has to heat up, this is shown directly on the display.
- Activate new setting options for milk system after cleaning and machine start.

Improvements:

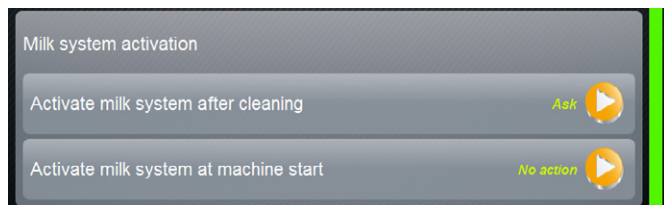
- Drainage without powder and steam wand works correctly.
- Delay for "Pay for my beverage" fixed.
- Beverages are available after fixing the water flow error during beverage supply.
- Beverages with several strokes are detected correctly by the telemetry.
- The red dot  for pending forced cleaning is displayed correctly.
- Cleaning is detected correctly by mandatory cleaning.
For example: Mandatory cleaning of the machine is configured for Wednesday. On Tuesday, cleaning is done and the machine is switched off. On Wednesday, the machine is not used. If the machine is started on Thursday, mandatory cleaning does not start.
- Adapted menu card is displayed correctly even without restart.
- Payment error during free vending fixed.
- If a rinsing cannot be performed, it is ended. The display does not get stuck at "Please wait".
- This machine is no longer heated up after descaling. This is done when the machine is restarted.
- Errors during a cleaning, rinsing or descaling are displayed correctly.
- No milk dispensing when the beverage is cancelled due to overloaded grinder.
- Full level differences with espresso fixed.

 **NOTE**
Version 3.0.2 is not backwards compatible.
 If 3.0.2 is installed on the machine, NO older software can be used.

 **NOTE**
 Error logs can sometimes be faulty. This will be revised in one of the next software versions.

Activating the milk system

The handling for activating the milk system has been revised. The following parameters are now available in the "Milk system" menu.



Activating the milk system after cleaning

- Ask - after cleaning is complete, it asks whether the milk system should be switched on or off.
- Automatic activation - milk system is activated after cleaning.

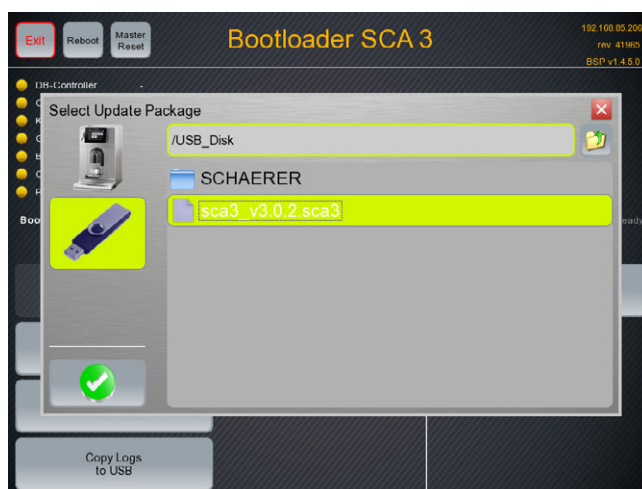
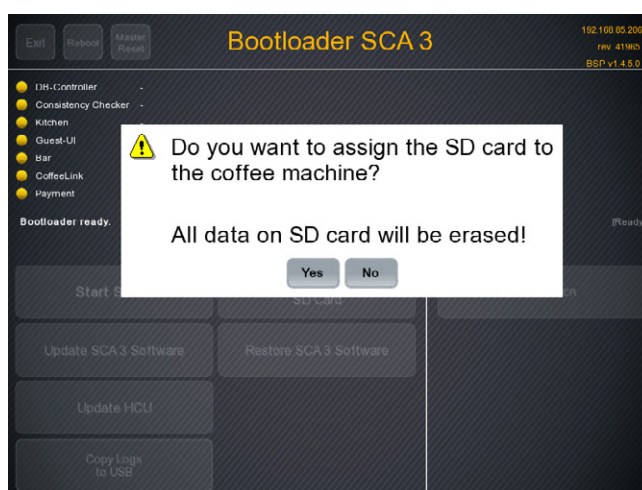
Activate the milk system when the machine is started.

- No action - setting from before switch-off is adopted.
- Ask when deactivated - query if the milk system was deactivated before machine start.
- Automatic activation - milk system is activated when machine is started.

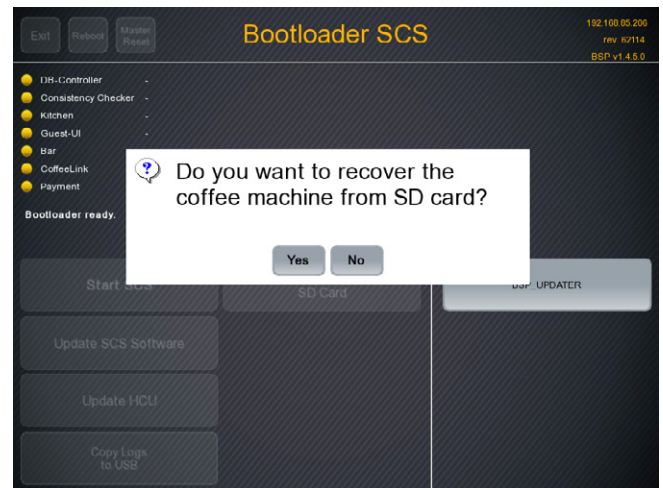
Procedure for a defective display from 3.0.2

If a display for which 3.0.2 or higher was installed must be replaced by an older display, proceed as follows.

1. Remove defective touch panel and install replacement panel.
IMPORTANT: Leave SD card in the replacement panel! Do not yet replace with card from the defective touch panel!
2. Switch on the machine.
3. Machine starts and remains in bootloader.
4. Activate "Yes" field -> SD card from replacement panel is formatted. **Note:** No data is lost since this SD card is still empty.
5. Then start the software update.
6. Wait until the update has run and the machine has restarted. When commissioning comes on, switch the machine back off.
7. Insert SD card from the defective touch panel into the new touch panel and remove USB stick. Then switch the machine back on.



8. Machine starts and remains in bootloader again.
9. Confirm "Yes" field.
The software which was previously installed on the machine is now reinstalled and the last state of the database is restored.



10. Wait until the machine restarts and the guest UI is displayed.
Note: Commissioning does not have to be run (certain cleanings might have to be done). The version can be checked in the management UI.
Note: A higher version than 3.0.2 can now be installed again.

Versions		08.20.20.02.2018
** Service technician **		
Name	Version	
Touch panel software	v3.0.2 (Created: 18-01-26 11:24)	
Power section software	0.0	
Database version	2040	
BSP version	BSP v1.4.5.0	
MAC address	78:59:3E:FA:63:7E	
Qt version	5.2.1 (source code: info@schaerer.com)	
Qt license	GNU LGPL version 2.1	
Software SCA3	Copyright 2017 Schaerer Ltd., Switzerland. All rights reserved.	