

T.I. no.: 2018 - 08 Updated: -	Topic: SCSoul mixer, longer milk hose
---	--

Date: 26.04.2018	Priority	Need for action
Affected machines: SCSoul	High	As soon as possible
To serial number: 1809 xxxxxx	X Medium	X On next visit to the machine
As of date: -	Low	FYI only

DESCRIPTION OF THE PROBLEM

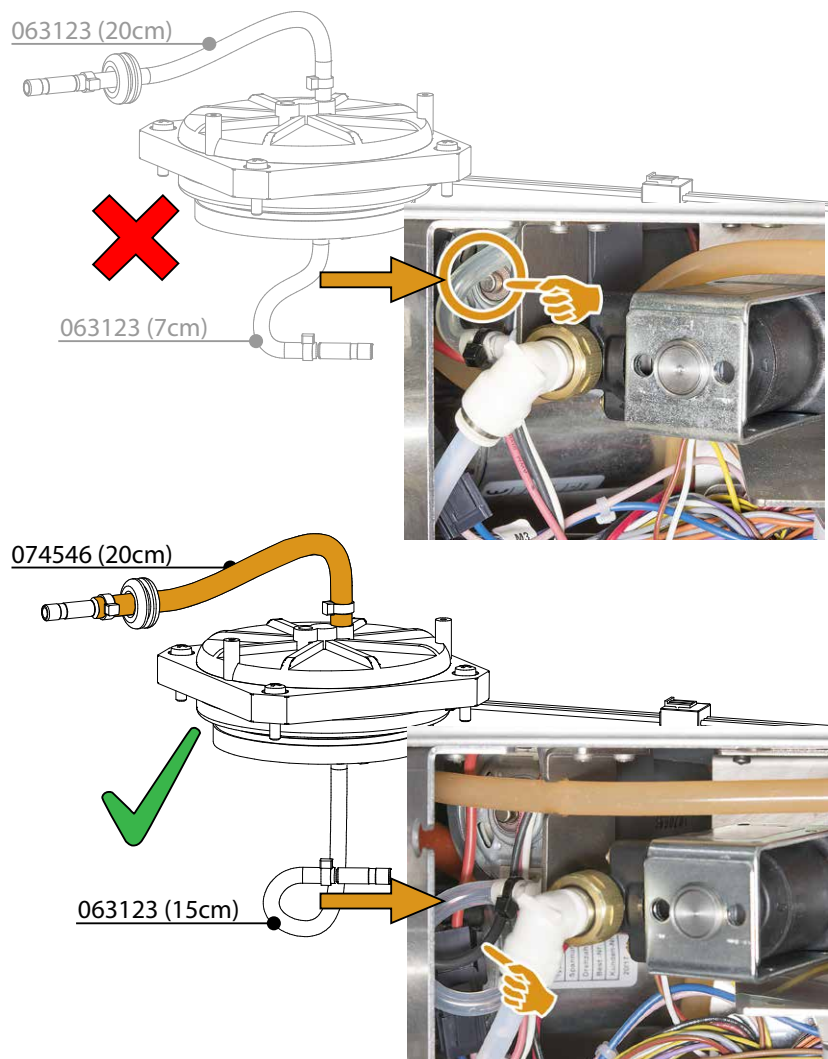
The milk hose tends to kink at the mixer input. At the mixer output, the milk hose is too short and can collide with the motor shaft of the grinder motor. This causes milk hose leakage.

SOLUTION TO THE PROBLEM

20 cm long milk hose 063123 at the mixer input is being replaced with new orange transparent milk hose 074546. At the mixer output, milk hose 063123 should be lengthened from 7 cm to 15 cm. To do so, 15 cm of the old milk hose (mixer input) is used.

REQUIRED MATERIAL

- 20cm hose type 074546 (orange)
- 3 cable ties (2x70 bl)

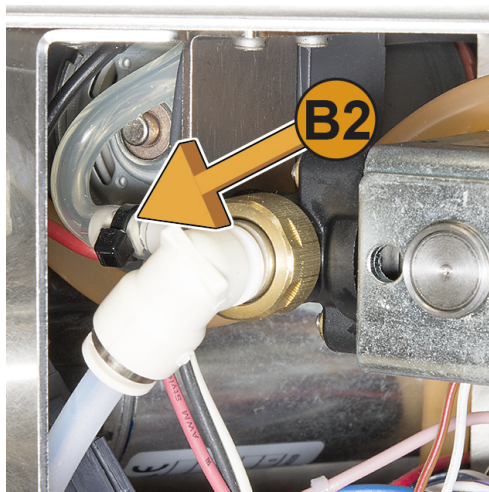


PREPARATION

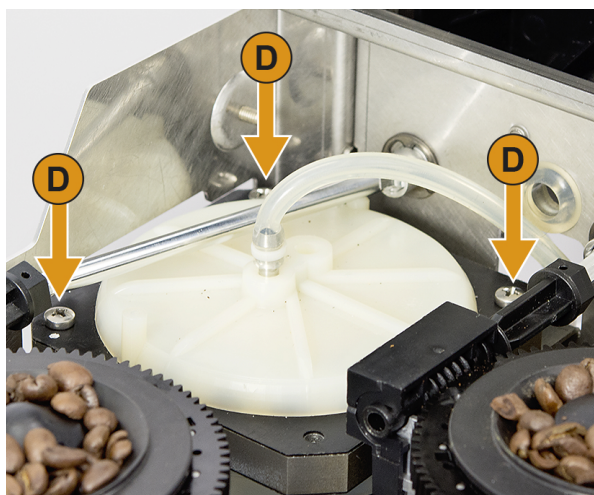
- ▶ Switch off the machine.
- ▶ Lift user panel and remove cover before the milk pump.
- ▶ Remove right side housing.
- ▶ Remove top housing.

DISASSEMBLING MIXER

- ▶ Mixer, input-side: Remove hose connection including hose sleeve [A2] from the angle piece.
- ▶ Mixer, output-side: Remove hose connection including hose connector [B2] from the solenoid valve.

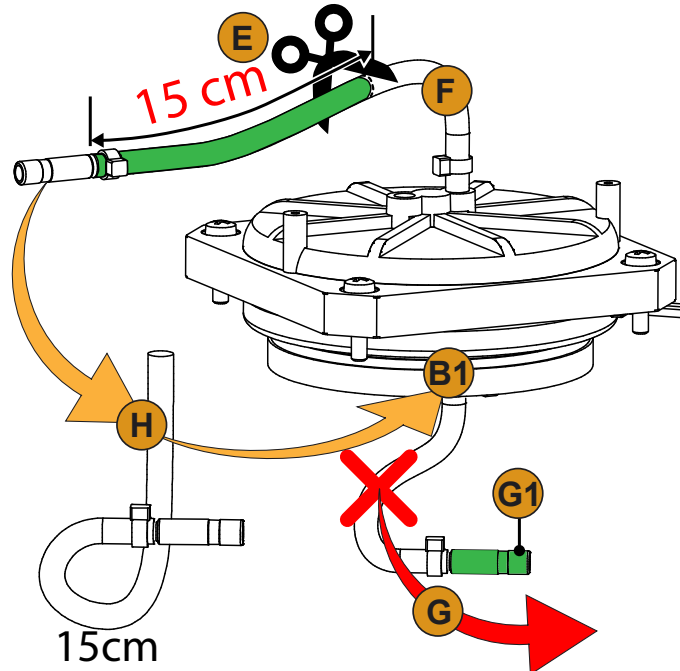


- ▶ Remove shaft [C] of the manual grinding degree adjuster.
 - ▶ Disassemble the mixer including hose connections by loosening the 3 screws [D].
- The mixer is now freely accessible to allow adjustment of the hose connections of the input and output.



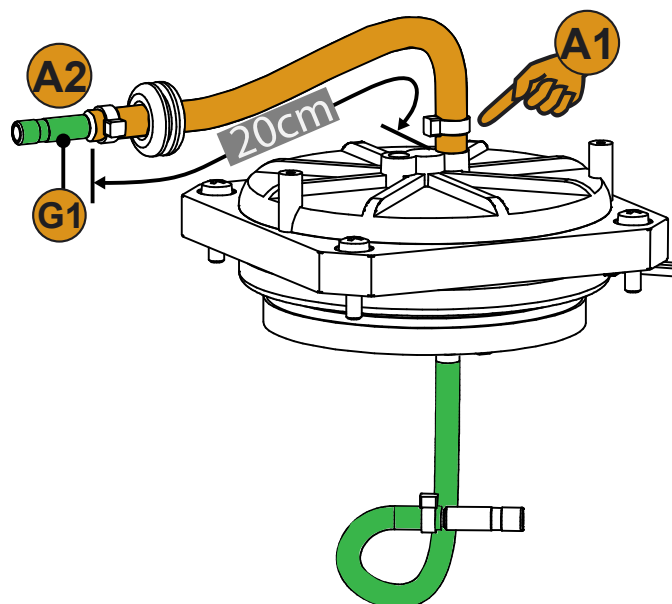
MOVING MIXER INPUT HOSE CONNECTION

- ▶ Cut 15 cm of hose 063123, mixer input [E].
- ▶ Remove remaining hose [F] by loosening the cable tie.
- ▶ Loosen cable tie on mixer output [B1] and remove hose [G], put sleeve [G1] aside for the next step.
- ▶ Assemble 15 cm hose section [H] at mixer output [B1] and secure with a cable tie.
- ☑ The hose connection with the new length of 15 cm from mixer output [B1] is assembled.



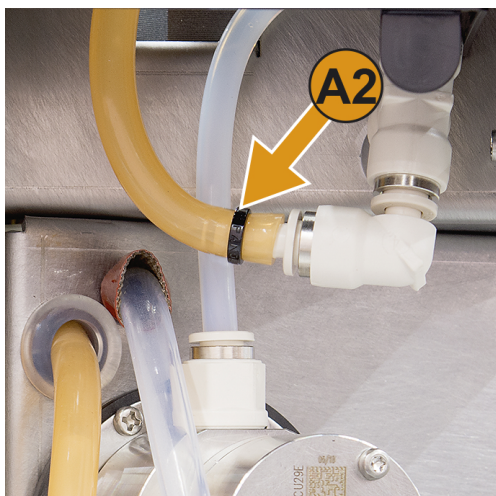
NEW HOSE CONNECTION, MIXER INPUT

- ▶ Cut new hose type 074546 (orange) to 20 cm.
- ▶ Connect 20 cm milk hose 074546 to mixer [A1] and secure with a cable tie.
- ▶ Insert sleeve [G1] from old hose mixer output, see figure above, into the new hose end [A2] and secure with a cable tie.
- ☑ The new hose connection to mixer input [A1] is connected.
- ▶ Reassemble the mixer with the new hose connections and fix with the 3 screws.



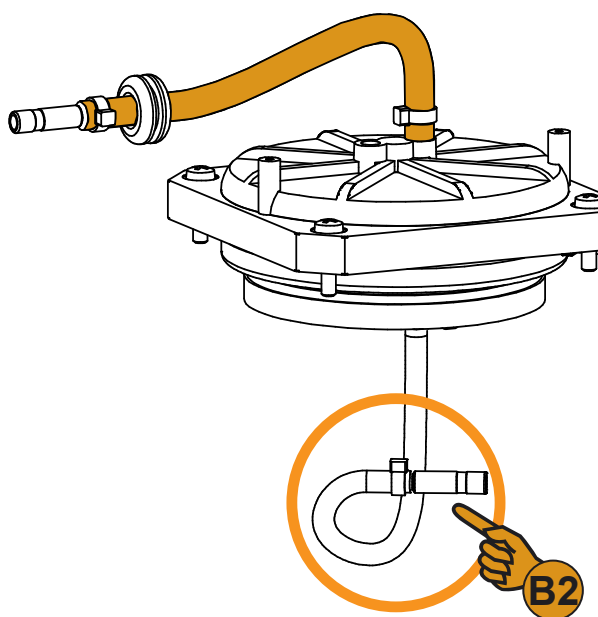
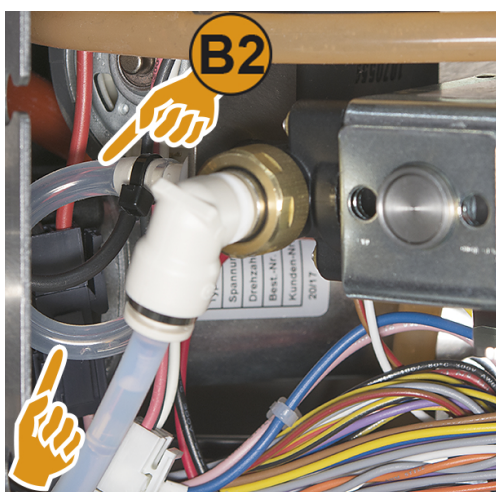
CONNECTING HOSE CONNECTIONS, MIXER INPUT AND OUTPUT

- ▶ Reinsert sleeve from milk hose, mixer input [A2] into the angle piece.



- ▶ Plug sleeve from milk hose, mixer output [B2] back into the solenoid valve. Note milk hose guide as shown in the figure at the bottom right.

- ☑ The mixer is assembled and all hose connections from the mixer input and output are connected again.



FINAL STEPS

- ▶ Place cover back on before the milk pump.
- ▶ Reassemble side housing.
- ▶ Reassemble top housing.
- ▶ Switch the machine back on.
- ☑ The machine is again ready for use.

(EN) This page is intentionally left blank.

(DE) Diese Seite wurde absichtlich frei gelassen.

(FR) Cette page est laissée vide intentionnellement.

(ES) Esta página se dejado en blanco intencionalmente.