

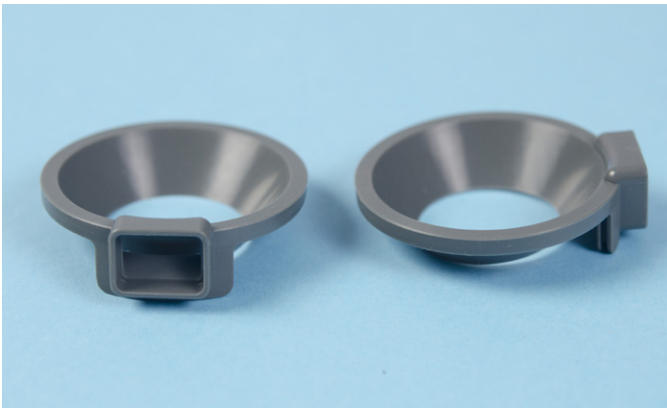
T.I. no.: 2018 - 11 Updated: -	Topic: Extraction device mixing cup
---	--

Date: 13/06/2018	Priority	Need for action
Affected machines: SCP	High	As soon as possible
From serial number: 1818.../	Medium	On next visit to the machine
As of date: 30.04.2018	X Low	X FYI only

Improved extraction device for the powder system

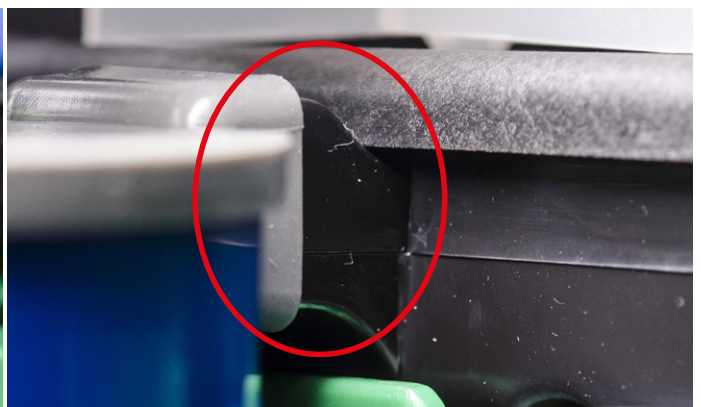
The mixer has been revised in order to improve the extraction device and improve the cleaning process. The old silicon insert is no longer used. A new feature is that the complete upper part of the mixer is now one piece.

The new extraction device is available under part no. (073666) and will replace the silicon insert and cover (073627). Starting in CW18 (S.N. 1818...), the adapted extraction device will be integrated in the series.



Installation:

- ▶ Turn the powder outlet to the side.
- ▶ Pull out the mixing bowl insert.
- ▶ Remove the mixing bowl silicon insert and cover.
- ▶ Mount the new silicon attachment.
- ▶ Push in the mixing bowl insert.
- ▶ Turn the powder outlet into the correct position.



During installation, ensure that the silicon attachment completely surrounds the mixing bowl and the opening of the extraction device.

(EN) This page is intentionally left blank.

(DE) Diese Seite wurde absichtlich frei gelassen.

(FR) Cette page est laissée vide intentionnellement.

(ES) Esta página se dejado en blanco intencionalmente.