

<b>T.I. no.:</b> 2018 - 23 <b>Updated:</b> -	<b>Topic:</b> New level monitoring position
---	---

<b>Date:</b> 11.09.2018
<b>Affected machines:</b> SCP
<b>From serial number:</b> 1834.../
<b>As of date:</b> -

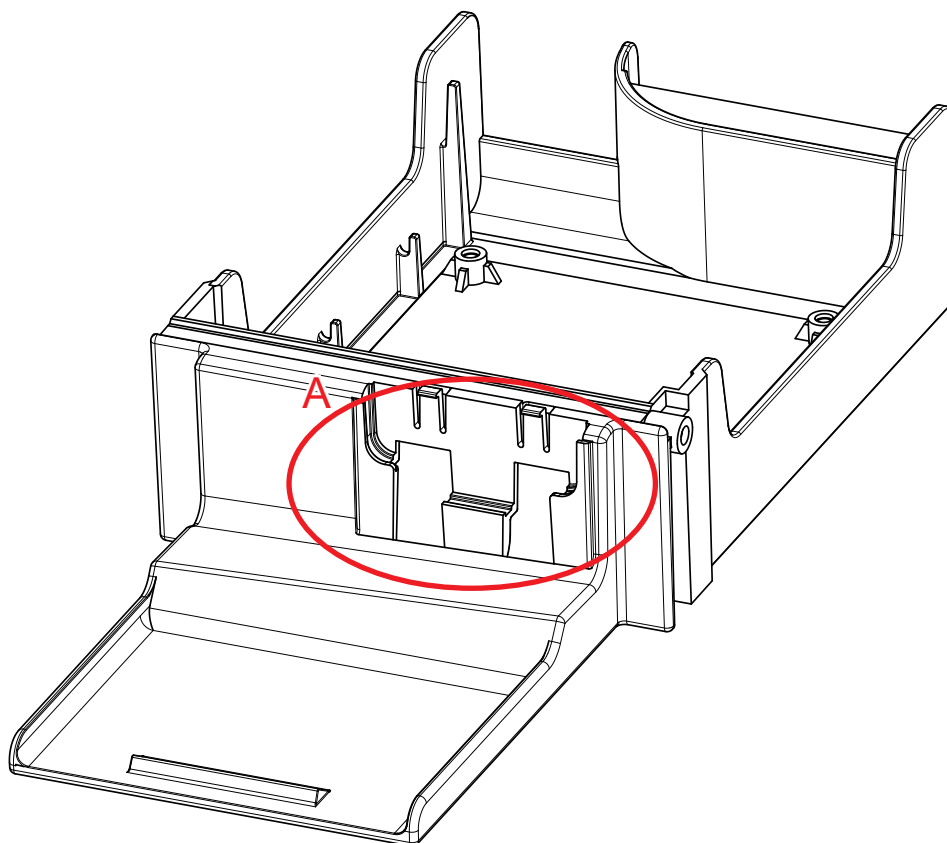
Priority	
	High
	Medium
X	Low

Need for action	
	As soon as possible
	On next visit to the machine
X	FYI only

## NEW LEVEL MONITORING POSITION

In rare cases, the level monitoring does not work properly. The position of the sensor has therefore been adjusted.

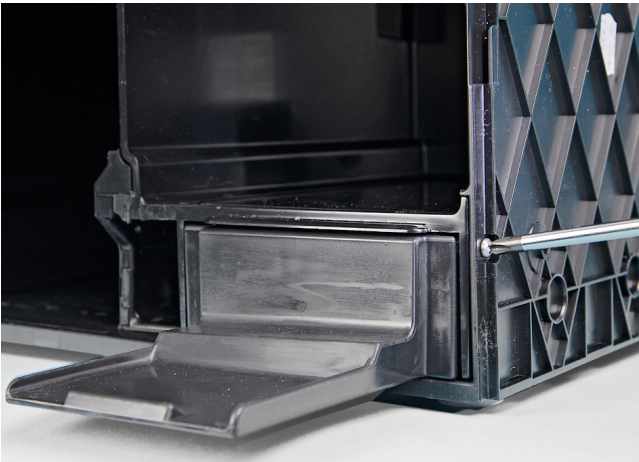
The level monitoring is now found in the insert (065676) of the cycle power supply. A recess (A) is now present for the sensor. An extension cord (073681) is also necessary since the distance to the connection is longer.



This change can also be retrofitted with the kit (075149). Brief instructions follow which show how to rewire the level monitoring.

## Installation of the sensor

The kit (075149), consisting of the new insert (065676), the sensor (065767) and the extension cord (073681), is needed for installation. To simplify mounting, the already-installed sensor remains in the machine and is only unplugged.



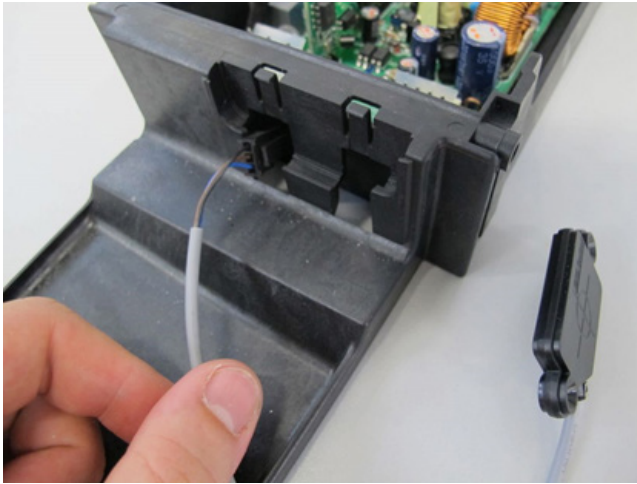
- ▶ Switch off the machine and remove the rear and right housing as well as the grounds container.
- ▶ Unscrew the individual screw on the right side.



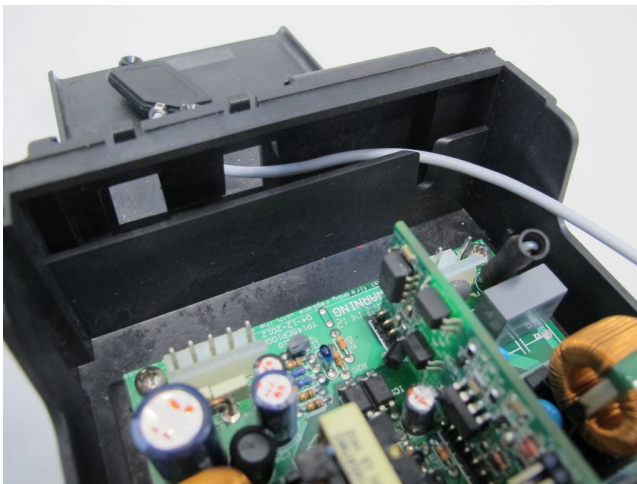
- ▶ Pull out the insert until the connectors can be removed.
- ▶ Pull out the insert completely.



- ▶ Loosen the four screws which fasten the power supply.
- ▶ Place the power supply in the new insert and refasten with the screws.



► Lead the sensor cable into the left opening.



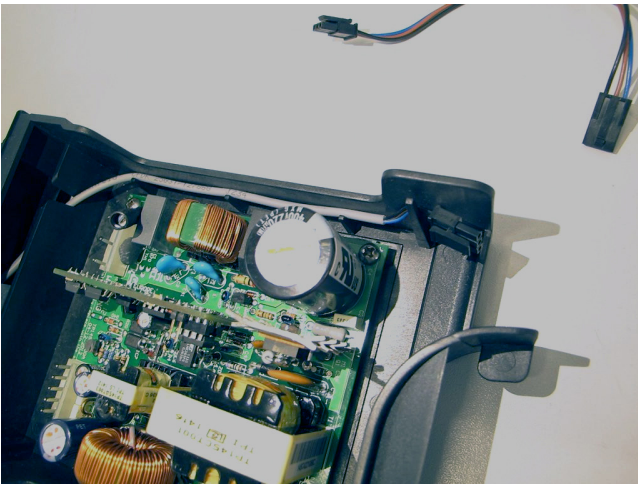
► Pull up through the cable guide on the rear side.



► Place the sensor in the recess.



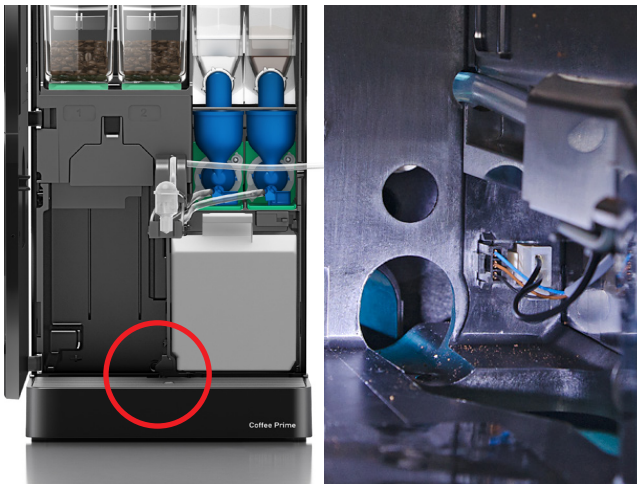
- ▶ Press the sensor down until the snap engages.



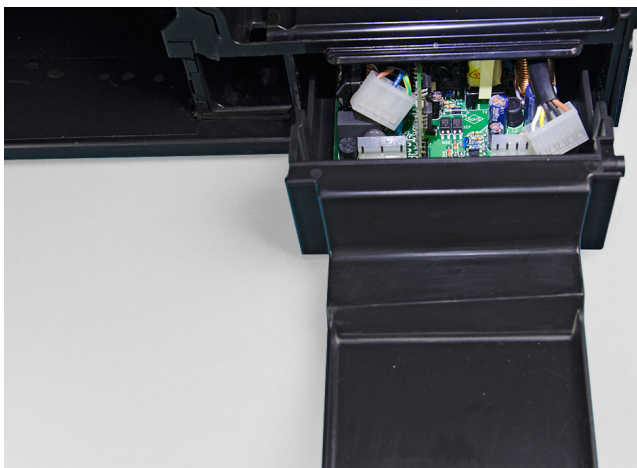
- ▶ Fasten the cable in the cable guide.



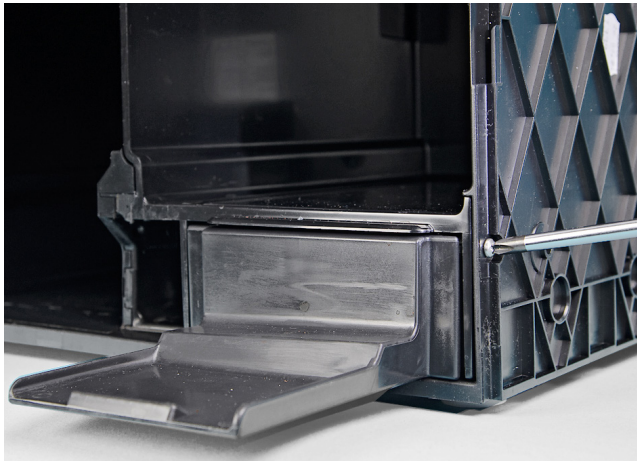
- ▶ Connect the extension cord.



- ▶ In the brewing chamber, unplug the connector of the existing sensor and fasten with a cable tie.



- ▶ Reconnect the cable.



- ▶ Push the insert back into the machine.
- ▶ Connect the sensor cable of the new sensor.
- ▶ Tighten the screw on the right side.
- ▶ Mount the housing.