

T.I. no.: 2019 - 03 Updated: -	Topic: SC Soul Software 4.0.5
-------------------------------------------------	--------------------------------------

Date: 11.02.2019	Priority	Need for action
Affected machines: SC Soul	High	As soon as possible
From serial number: 1907../	Medium	On next visit to the machine
As of date: -	X Low	X FYI only

NEW FUNCTIONS AND IMPROVEMENTS

New functions:

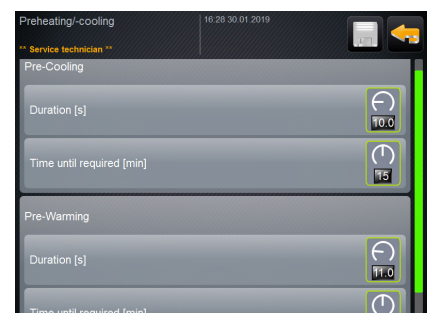
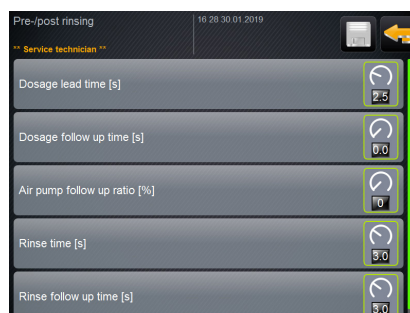
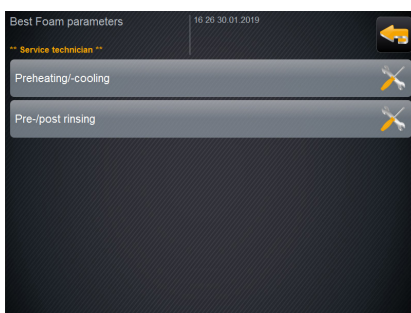
- Commissioning sequence simplified.
- Icon for cold water implemented.
- Time specification after dispensing of a test beverage.
- The Best Foam parameters have been divided up into submenus.
- Brewing unit encoder is supported by the software.
- Software support for 3 boilers implemented.

Improvements:

- Text entry field optimised.
- [Cancel] field in footer revised.
- If boiler filling is not started by the user during a machine restart, the filled steam boiler heats up until the overpressure valve switches.
The V15 valve is opened during every machine start to prevent this.
- If a brewing unit encoder is present, initialisation is not performed during rinsing.
- In a machine with drinking water tank, the Best Foam mixer is not rinsed/cooled with cold water.
- Decimal point inserted for milk temperature setting.
- Commissioning and hardware detection extended with standard 2/2-way valve. The valve can be selected via the menu.
- A non-identifiable amount also remains hidden after beverage supply.
- If the V07 valve is incorrectly configured, it can also be corrected after machine start.
- Heating is switched off during pump calibration.
- Limit value for flow meter error raised from 2 to 5 seconds.

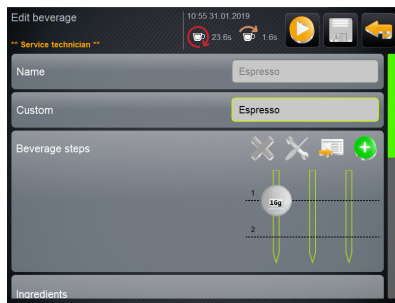
Best Foam parameters

The Best Foam parameters have been divided up into submenus to make them more clear.



Time specification for test beverage dispensing

If a beverage is dispensed in the recipe settings, the duration of beverage dispensing and the extraction time are now displayed.



Beverage dispensing duration



Extraction time

