

T.I. no.: 2019 - 14 Updated: -	Topic: SC Soul Software 4.6.5
--	--------------------------------------

Date: 25.09.2019	Priority	Need for action
Affected machines: SC Soul	High	As soon as possible
From serial number: 1938../	Medium	On next visit to the machine
As of date: -	X Low	X FYI only

IMPORTANT

After the change to the new grinder motor, under some circumstances it may not be correctly detected during hardware detection with version 4.4.x and 4.6.x. In order to prevent errors, the grinder motor must be activated manually.

This fault will be corrected with version 4.8.x.

NEW FUNCTIONS AND IMPROVEMENTS

New functions:

- Beverages can be locked via the telemetry portal.
- Beverages can be unlocked on the machine if they were locked using the telemetry system.
- Beverage pre-modifiers can now be selected one after the other.
- Milk system calibration
- Cup sizes can be renamed
- 12 beverages possible instead of 8 with tabs
- New beverage icons (cups are now also available in addition to mugs)

Improvements:

- Hot water boiler regulation adjusted.
- Default steam boiler temperature for Best Foam with standard 2/2-way valve adjusted to 127° C.
- Pressing the external buttons quickly and repeatedly could cause the machine to switch off.
- The cold water addition function was partially activated in machines with Hot&Cold even though the quantity was set to 0 ml.
- Animation for Milkpure powder integrated.
- Overpressure in hot water and steam boiler when machine is powered down has been fixed.
- Cleaning with drinking and waste water tank works correctly.

Sequential beverage modification

The [Sequential beverage modification] parameter can be activated in the "Configuration" -> "Operating mode" menu. Modifications such as cup size, coffee beans, etc. can be displayed one after another in "Self-service mode".



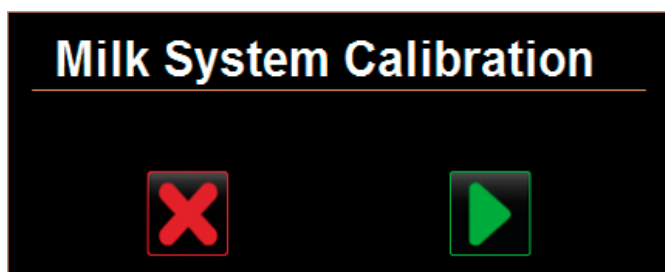
Milk system calibration

Milk system calibration enables a very high consistency of temperature, quantity and foam quality between different machines. Calibration should be done on every machine.

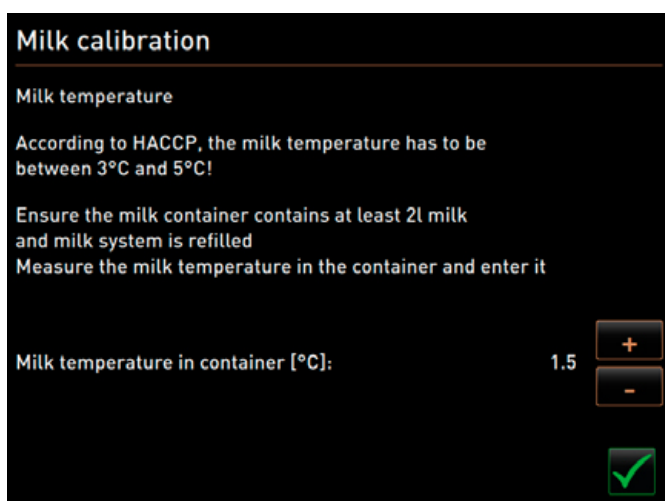
"Service" -> "Calibrate milk system" menu

After confirmation, the following display-guided calibration functions for the milk system start:

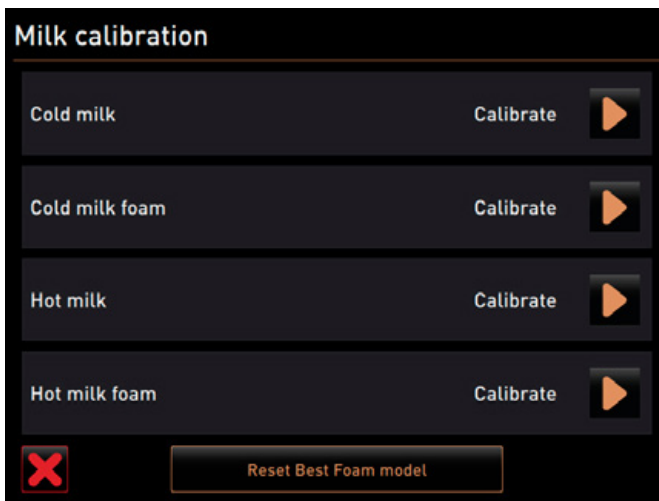
- Cold milk
- Cold milk foam
- Hot milk
- Hot milk foam



- ▶ Select the "Service" – "Milk system calibration" setting.
- The confirmation window opens.
- ▶ Confirm with the [] field.
- An instruction appears prompting you to measure the milk temperature.



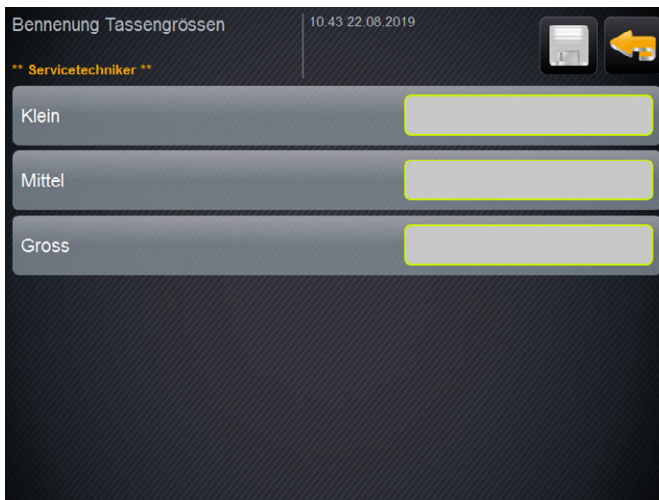
- Follow the instructions for measuring the milk temperature
- ▶ on the display.
- ▶ Enter and confirm the value.
- An overview of the possible calibration settings is displayed.



- ▶ Start the desired type of calibration.
 - Cold milk
 - Cold milk foam
 - Hot milk
 - Hot milk foam
- Follow the instructions on the display to carry out the calibration process.

Cup size names

Any names can be selected for the cup sizes in the "System" -> "Cup size names" menu.

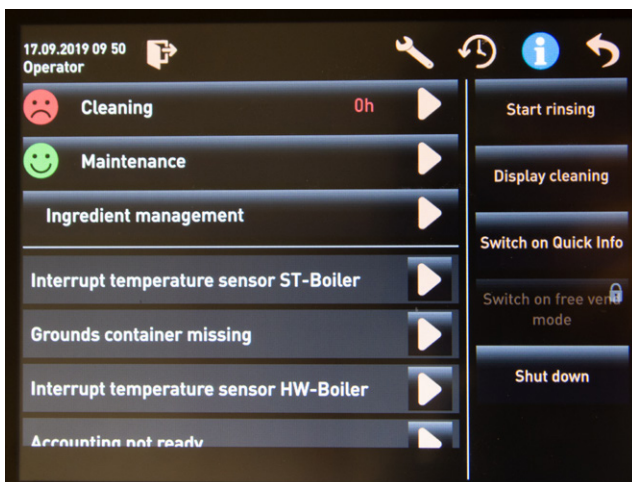


Incorrectly set dip switches on power board

Incorrectly set dip switches on the power board cause machine malfunctions and make it impossible to operate the machine.

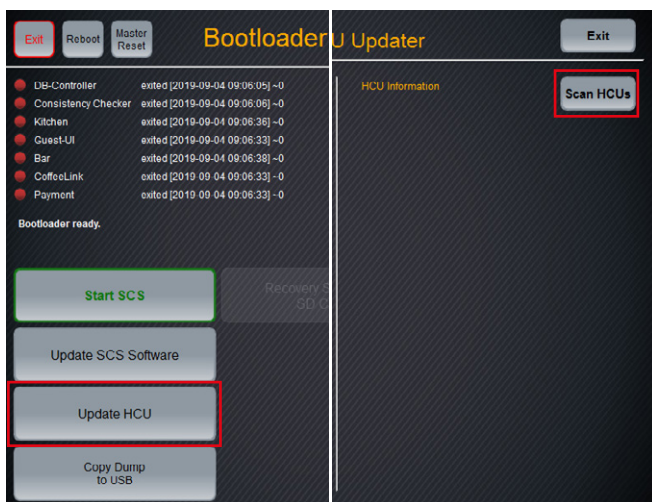
Error description

The following errors make it possible to identify incorrectly set dip switches:

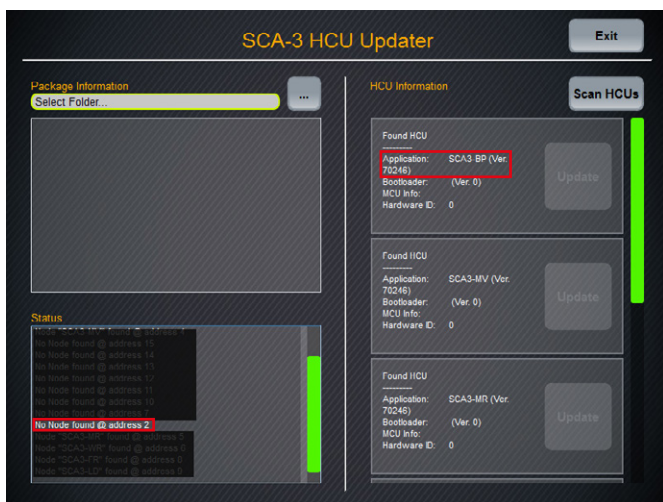


- Machine stops when the boiler is heating up. Incorrect temperature values are displayed at this time.
- Several different errors are displayed in the Operator menu.
- Hardware detection during commissioning takes a very long time. The power section is not detected after completion, sometimes nearly all components are not detected.

Testing



- ▶ Open the “Update HCU” menu in the bootloader.
- ▶ Then press the “Scan HCUs” button.



If no node was found at address 2 and node “SCA3-BP-EXT” was found at address 3, the dip switch is set correctly.

Remedy

- ▶ Shut down and disconnect machine.
- ▶ Remove housing left.
- ▶ Switch the dip switches on the power board to the left.
- ▶ Put machine into operating again.

