

T.I. no.: 2020 - 09 Updated: -	Topic: Schaerer Barista product optimisation, formed seal for grime deposits
---	---

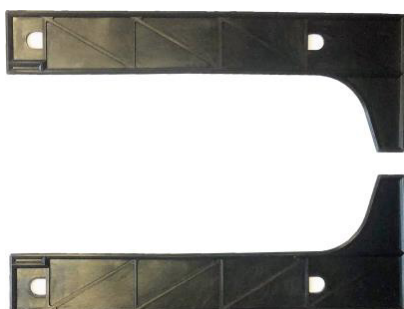
Date: 20/3/2020	Priority	Need for action
Affected machines: Schaerer Barista	High	As soon as possible
From serial number: See series and spare parts solution	X Medium	X On next visit to the machine
As of date: Immediately	Low	FYI only

OPTIMISATION

Reports from the field have stated that grime deposits can form in the side area of the drip tray, in the space between the machine frame and side panel. The main cause of this are beverages/milk/milk foam residues which are spilled or poured into the drip tray in large quantities. They then overflow and get into this space, where they dry.

In general, customers should be informed that no large amounts of liquid should be poured into the drip tray. Since this cannot be completely avoided, however, a formed seal must be inserted into this space.

Formed seals



For right side panel:
33.4281.5000

For left side panel:
33.4281.6000

Series and spare parts solution

The optimisation has been introduced into series production with the following serial numbers:

13232-13235, 13244-13246, 13248-13250, 13252 et seq.

The spare parts store is stocked and the formed seals can be ordered as per usual.

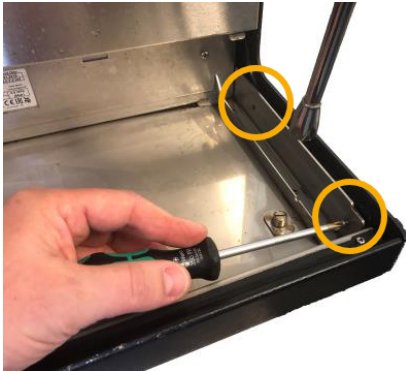
TECHNICIAN INFORMATION

We recommend retrofitting the formed seals in machines in the field for which complaints have been made about the described space. Notes on retrofitting on the following page.

Notes on retrofitting

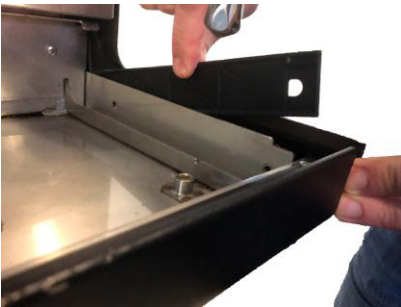
Retrofitting on machines in the field can be done in just a few steps and should always be carried out on both sides if needed.

1. Loosening side panel



- ▶ Remove drip grid and drip trays
- ▶ Loosen the 2 front screws (see marking) of the side panel and remove the screws

2. Inserting formed seal



- ▶ Slightly bend the side panel outwards
- ▶ Should you find any contamination when doing so, remove it before inserting the formed seal
- ▶ Insert the formed seal into the inner side of the side panel (between frame - side panel)

3. Checking formed seal fit



- ▶ Check whether the formed seal was completely inserted into the side panel
- ▶ Screw side panel back to the frame
- ▶ Repeat step 1 - 3 on the other side
- ▶ Insert drip trays and drip grids