

T.I. no.: 2015 - 08 Updated: -	Topic: Electronics mains water supply retrofitting set 074456
---	--

Date: 13.04.2015
Affected machines: SCJ
From serial number: -
From date: CW 16

Priority	
	High
	Medium
X	Low

Need for action	
	As soon as possible
	On next visit to the machine
X	FYI only

OVERVIEW

Optimal filling of the drinking water tank is ensured with the use of the control electronics in the "mains water supply option" (071935) of the SCJ.

The retrofitting set can be ordered under article number 074456 through the SAG sales channel.

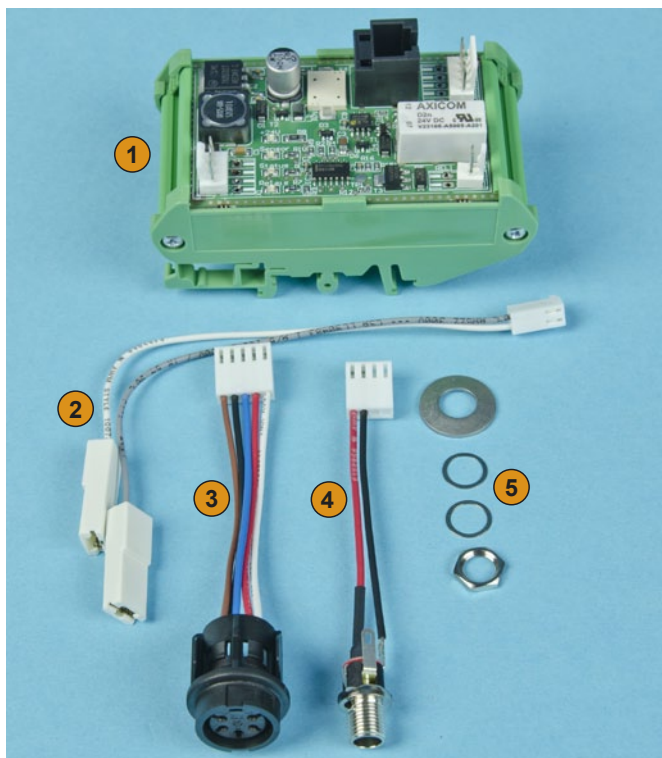


Connection housing with old electronics



Connection housing with new electronics

MAINS WATER SUPPLY ELECTRONICS RETROFITTING SET (074456)

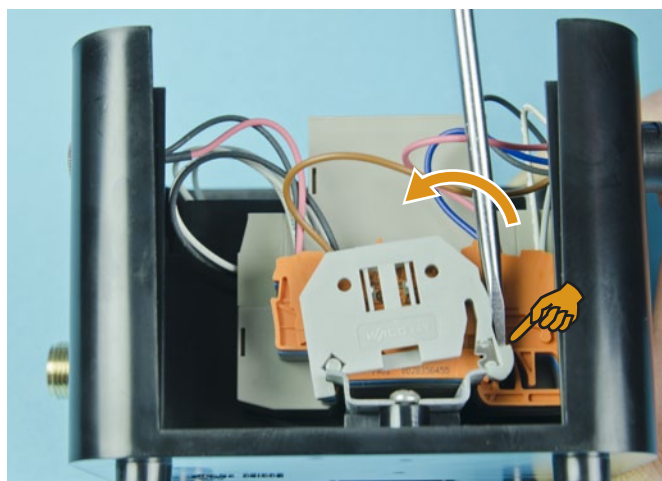


Mains water supply electronics retrofitting set

The retrofitting set contains the following parts:

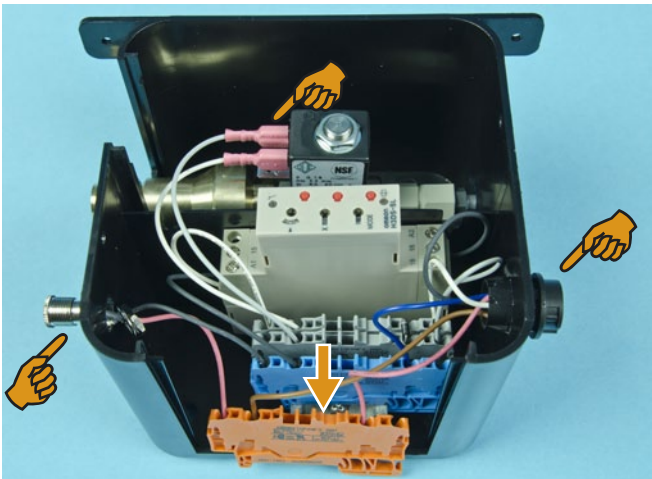
1. Control electronics with base
2. Valve connection cable
3. Drinking water tank adapter connection cable
4. Power supply connection cable
5. Washers and nuts for fastening the power supply connection cable

INSTALLATION INSTRUCTIONS



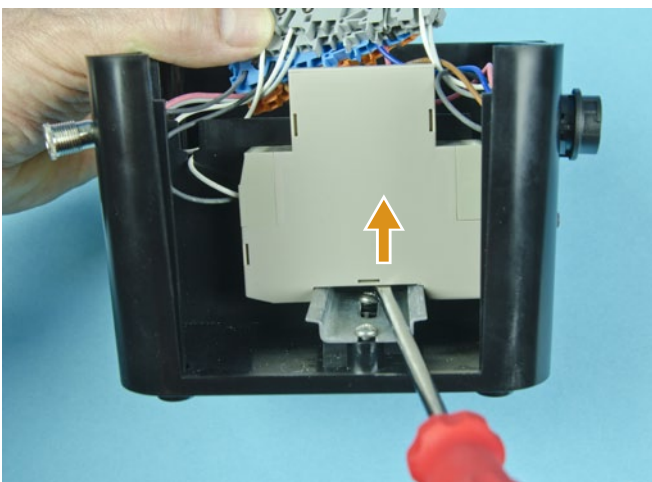
Disassemble clamp mounting

- ▶ Remove the cover of the connection housing.
- ▶ Disassemble clamp mounting with a size 2 slotted screwdriver as shown.



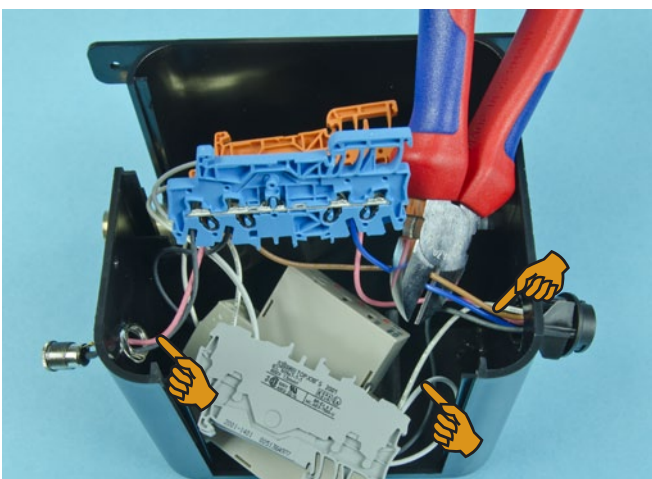
Remove connections from the housing

- ▶ Pull the four connection terminals forwards.
- ▶ Loosen the drinking water tank adapter connection from the housing.
- ▶ Loosen the power supply connection by removing the nut from the housing.
- ▶ Pull off the valve cables.



Remove time relay

- ▶ Lever the time relay out of the holder with a size 2 slotted screwdriver as shown.

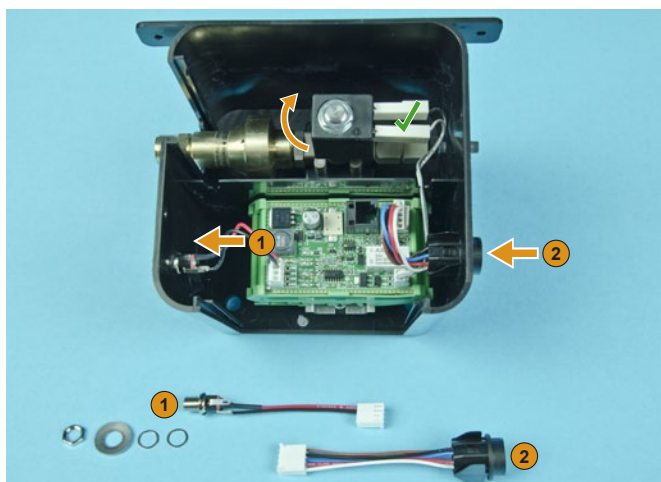


- ▶ Cut the connection cable with wire cutters.
- ▶ Remove all loosened components from the connection housing.



Install control electronics with base

- ▶ Install the new control electronics with base in the connection housing.



Install and hook up cables / connectors

- ▶ Stick the power supply connection cable (1) through the provided hole from inside.
- ▶ First install the two small washers on the screw thread of the power supply connection cable, then the large washer with the curve outwards. Fasten the connector with the nut.
- ▶ Stick the drinking water tank adapter connection cable (2) through the provided hole from outside. Press the connector tabs together and insert into the hole.
- ▶ Turn the solenoid of the valve by 180°.
- ▶ Insert all cables as shown.
- ▶ Install the cover of the connection housing.