

T.I. no.: 2016 - 02 - b Updated: -	Topic: New safety valve
-----------------------------------------------------	--------------------------------

Date: 2016
Affected machines: SM2
From serial number: -
As of date: 01/02/2016

Priority	
	High
	Medium
X	Low

Need for action	
	As soon as possible
	On next visit to the machine
X	FYI only

TABLE OF CONTENTS

Introduction.....	1
Overview	1
Preparation	2
Disassembly of old safety valve	2
Assembly of new safety valve	3
Assembly of outlet connector extension	3
Check for leaks and assembly of housing	3

INTRODUCTION

Safety valve 069927 is being replaced by a new version.

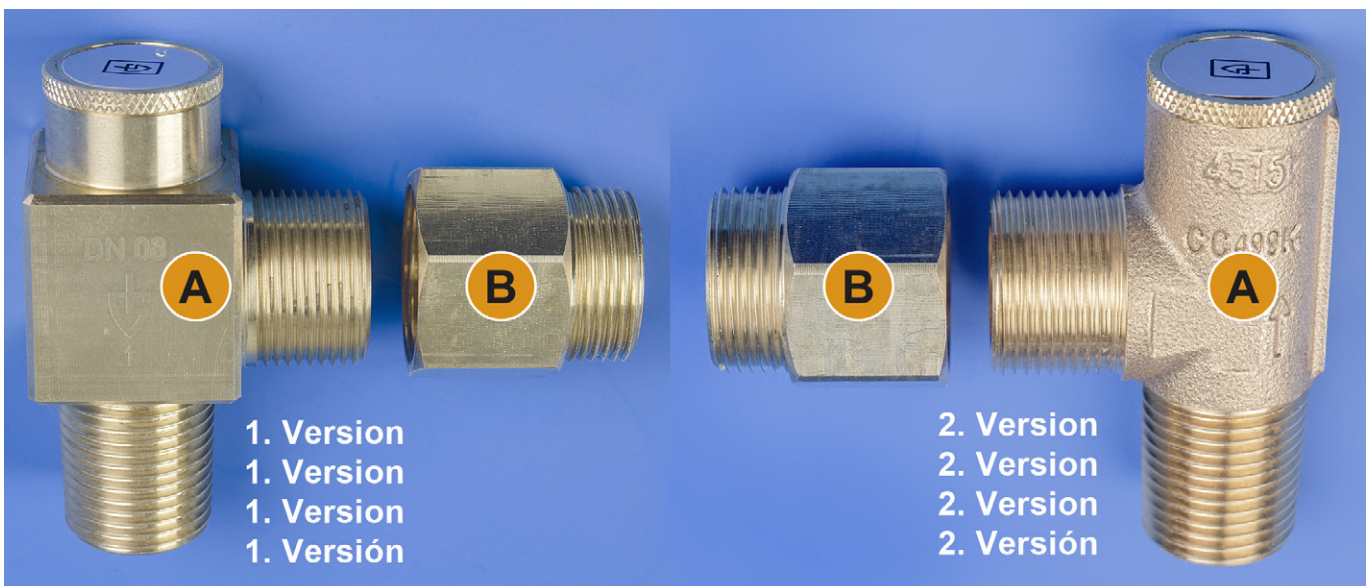
It is designed as two parts so that the new safety valve can be installed. The installation is different for this reason.

NOTE

- The 1.5 bar safety valve is backwards compatible.
- In the future, the safety valve will be available in a cast version in addition to the brass version.

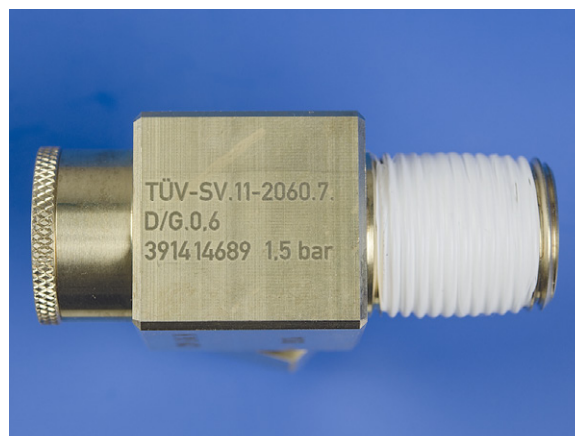
Overview

- A. 1.5 bar safety valve insert
- B. Outlet connector extension screw connection



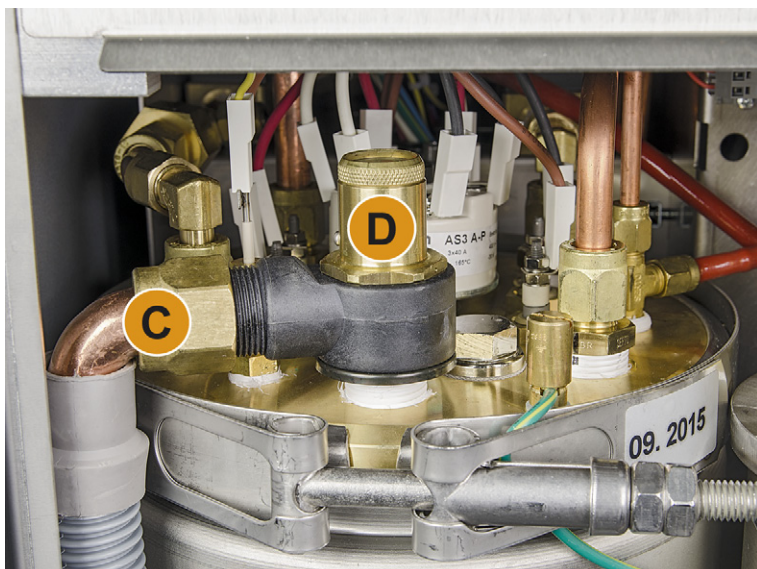
Preparation

- ▶ Seal safety valve screw-in connector with Teflon tape.



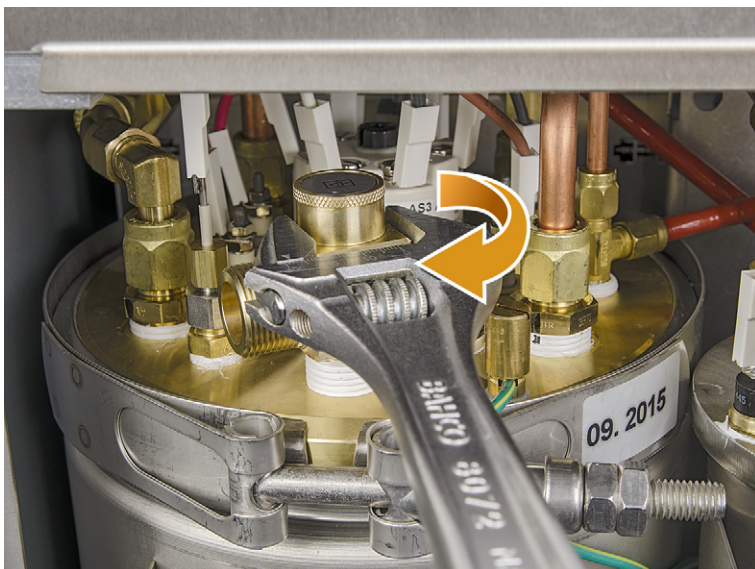
Disassembly of old safety valve

- ▶ Switch off the machine and disconnect it from the mains.
- ▶ Disassemble the left machine housing.
- ▶ Disassemble the bean hopper and mill housing.
- ▶ Disassemble the rear machine wall.
- ☑ The safety valve is now accessible.
- ▶ Disassemble old outlet screw connection [C].
- ▶ Disassemble the old safety valve [D] with a pipe wrench.



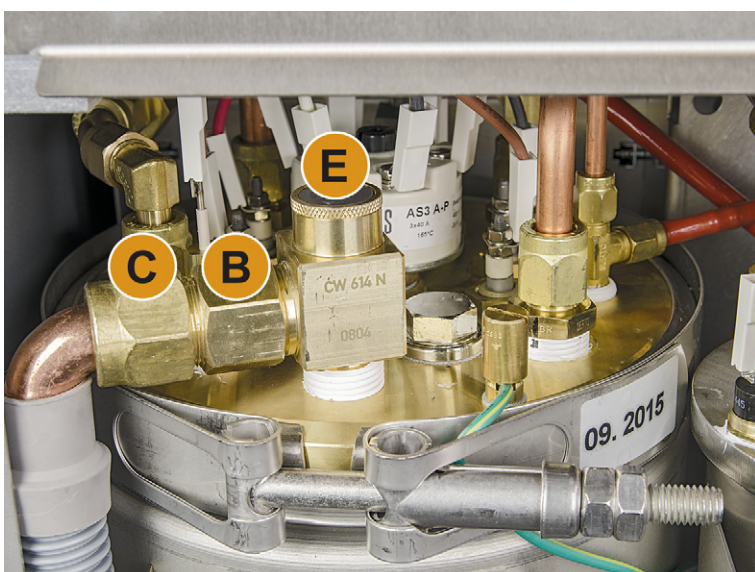
Assembly of new safety valve

- ▶ Screw in safety valve insert [A] into the boiler with the sealed screw-in connector.
- ☑ The outlet opening points to the left.



Assembly of outlet connector extension

- ▶ Screw outlet connector extension screw connection [B] onto the safety valve and tighten.
- ▶ Screw screw connection [C] from the outlet onto the safety valve.
- ▶ Assemble the drain hose.
- ▶ **Label safety valve with assembly date (month and year).**



Check for leaks and assembly of housing

- ▶ Restore the mains connection.
- ▶ Switch on the machine and let it warm up.
- ▶ Inspect the safety valve connection for leaks.
- ▶ Check that manual outlet [E] is closed and leak-free.
- ▶ Switch off the machine and disconnect it from the mains.
- ▶ Reattach the housing parts and bean hopper.
- ☑ The machine again ready for use.