

<b>T.I. no.:</b> 2016 - 04 <b>Updated:</b> -	<b>Topic:</b> Retrofit kit for mixer extraction device
---	--

<b>Date:</b> 12.05.2016
<b>Affected machines:</b> SCP
<b>From serial number:</b> 1614...
<b>From date:</b> Week 14

Priority	
	High
X	Medium
	Low

Need for action	
	As soon as possible
X	On next visit to the machine
	FYI only

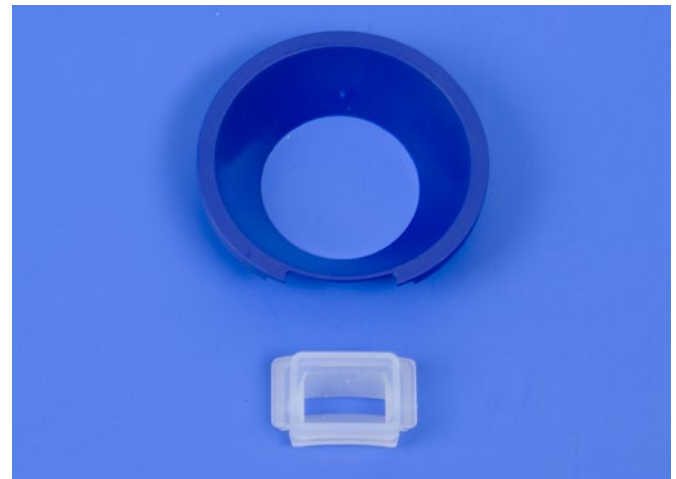
## OVERVIEW

The "retrofit kit for mixer extraction device" can be installed in each mixer unit to improve the extraction of the steam produced when dispensing a powder-based beverage. The article number of the "retrofit kit for mixer extraction device" is 073627.

From serial number 1614... / week 14, the "retrofit kit for mixer extraction device" will be installed at the factory.



Mixing cup without (left) and with (right) the new extraction device.



Retrofit kit for mixer extraction device 073627

## MOUNTING THE RETROFIT KIT FOR MIXER EXTRACTION DEVICE 073627



Pull out the mixing cup insert as far as it will go. Insert the mixer adapter into the cutout in the mixing cup.



Attach the mixer lid to the mixing cup.



Push in the mixer insert. Make sure that the "mixer adapter" completely encloses the intake nipple of the mixer channel.

(EN) This page is intentionally left blank.

(DE) Diese Seite wurde absichtlich frei gelassen.

(FR) Cette page est laissée vide intentionnellement.

(ES) Esta página se ha dejado en blanco intencionalmente