

| | |
|--|------------------------------------|
| T.I. no.: 2016 - 11 Updated: - | Topic: Software V5.92 SCA P |
|--|------------------------------------|

| | | |
|--|-----------------|------------------------------|
| Date: 24/10/2016 | Priority | Need for action |
| Affected machines: Schaerer Coffee Art Plus | High | As soon as possible |
| From serial number: all | Medium | On next visit to the machine |
| As of date: - | X Low | X FYI only |

TABLE OF CONTENTS

| | |
|---|----------|
| Description of functions and adaptations | 2 |
| NEW HARDWARE FUNCTIONS | 2 |
| NEW SOFTWARE FUNCTIONS | 4 |
| SOFTWARE ADAPTATIONS | 6 |
| SOFTWARE TROUBLESHOOTING | 6 |

OVERVIEW

The current version of the software is V5.92. Various improvements and additions have been made to the software since version V5.53:

New functions

Hardware:

- Automatically adjustable beverage outlet (AHA) (optional)
- Flavour Point (option)
- Twin Milk with CS2 milk system (cold milk system) (optional)
- Brewing unit with 30gr brewing unit (optional)
- Schaerer "M2M Coffee Link" telemetry solution (optional)

Software v5.92

- New user interface (Barista Silver) (standard)
 - > Including new beverage icon set
- Barista field (beverage option pre-selection) (standard)
- The "Info" main menu informs about the "OS" version (standard)
- Cleaning function in "Touch screen cleaning" service menu [30] (Standard)
- New selectable time zones with automatic switching between daylight savings time/standard time.

Adaptations

- Translations of the software texts revised
- Additionally available "Simplified Chinese" language (zh-cn)

Troubleshooting

- Troubleshooting > setting for steam boiler rinsing interval after an update.
- Troubleshooting > ECO mode function, time span until the boiler temperature is reduced.
- Troubleshooting > Twin Choco function on button machine fixed.



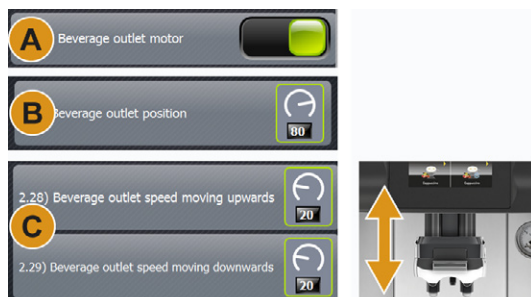
The software and programming instructions can be downloaded in the Media Centre (www.schaerer.com/member) (login required).

DESCRIPTION OF FUNCTIONS AND ADAPTATIONS

New hardware functions

Automatic height-adjustable beverage outlet (AHA)

The automatic height-adjustable beverage outlet (AHA) automatically adjusts to the configured beverage size. Manual adjustment is not possible.



Necessary settings in the menu:

- A) System > System parameters > [Beverage outlet motor]
 - > Activate/deactivate
- B) Configuration > Individual beverage settings
 - > Beverage outlet position
 - Position settings:
 - > Standard = [80]
 - > Up = [100]
 - > Down = [1]



Setting [0] deactivates the collision protection and should therefore not be used at all.

- C) Configuration > General settings
 - > Speed settings (higher/lower)
 - Speed settings:
 - > Standard up [80]
 - > Standard down [60]
 - > Max. speed = [100]
 - > Switched off = [0]

Features:

- As before, the beverage outlet contains the standard foamer head.
- The beverage outlet also contains 4 intakes for the hoses of the "Flavour Point" optional accessory.
- Cleaning the foamer head remains unchanged.

Flavour Point

The "Flavour Point" (A) optional accessory provides the option of dispensing a beverage with a flavour. This optional accessory contains intakes and pumps for 4+(2 reserve) flavour bottles such as various syrup types or spirits.



Necessary settings in the menu:

- System > System parameter > [Flavour pump 1 – 4]
- Configuration > Beverage settings > [Flavour settings]

Features:

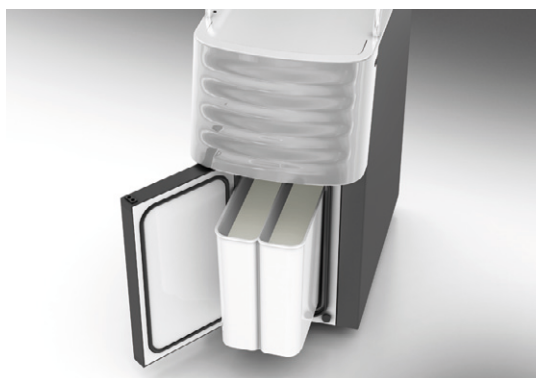
- The standard beverage outlet is not compatible.
- The "Flavour Point" beverage outlet is mandatory.
- The "Flavour Point" optional accessory is placed on the right side of the machine.
- A powder system can be placed in front of a "Flavour Point".
- Cleaning is automatic and display-guided (5 min.).
- Cleaning is done with a separate cleaning container and a 4-piece hose set with one connection adapter each (part no. 073550).



The Flavour Point optional accessory is supported in the SCA P standard version but is no longer available in the SCA P & Flavour Point configuration.

Twin Milk with CS2 cold milk system

The "Twin Milk" milk system is compatible with the CS2 cold milk system (cold milk foam). This makes beverage dispensing possible with two different milk types and cold milk beverages with cold milk foam. The Twin Milk system contains two milk containers with a capacity of 4 litres each.



Necessary settings in the menu:

- System > System parameters > [Twin Milk]
- Configuration > Beverage settings > [Milk mix setting]
 - > Milk left/Milk right/Milk mixed

Features:

- The "Twin Milk" optional accessory is on the left side of the machine.
- The milk container contains two milk chambers.

Brewing unit with 30 gr brewing chamber

The brewing unit with 30 gram brewing chamber instead of 16 grams supports the dispensing of larger amounts of coffee (small pots).

Necessary settings in the menu:

System > System parameters > [Brewing unit model]

Features:

Small amounts of coffee (8 grams - 9 grams) do not achieve the same high coffee quality as with the 16 gram brewing chamber.

Schaerer telemetry solution

The Schaerer "M2M Coffee Link" offers convenient real-time communication between the coffee machine and the administration.

The website "www.coffeelink.schaerer.com" (login required) is used for the utilisation and checking of the data recorded by the telemetry system. The modem is placed on the inside of the machine back. For mounting, see IA_022228 IA SCA P TI&BF M2M Coffee Link DE, EN



Necessary settings in the menu:

System > System parameters > [Activate telemetry]

Features:

- Reading out the operation and service processes
- External evaluation options
- Better billing control with payment systems

New software functions

User interface "Barista Silver" (standard)

The new "Barista Silver" user interface, which is considered the standard, contains all additional functions for beverage selection on one page.

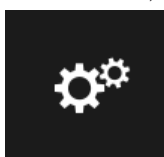


Necessary settings in the menu:

Configuration > Screen layout > Screen design > [Barista Silver]

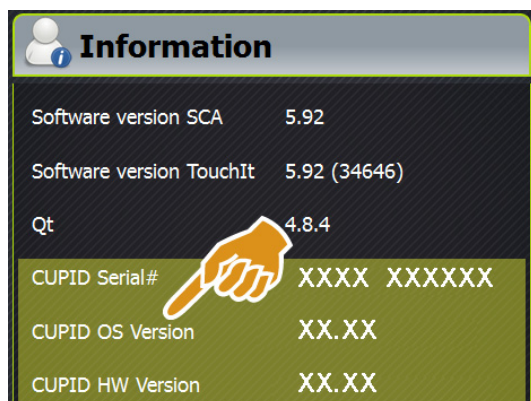
Features:

- A) Group selection. (up to 9 beverages can be configured in each group)
- B) Beverage option pre-selection [DECAF, Barista and 2x]
 - > 3 beverage options are available.
 - > The user interface allows the display of 2 pre-selection beverage options at one time.
 - > The "Barista" option makes it possible to choose between 3 different coffee strengths. A medium strength (2 beans) is set by default.
- C) Beverage field with integrated information on the assigned Flavour beverage option as well as new beverage icons.
- The service menu is represented with a new icon in the "Barista Silver" user interface, see figure below.



OS software version information

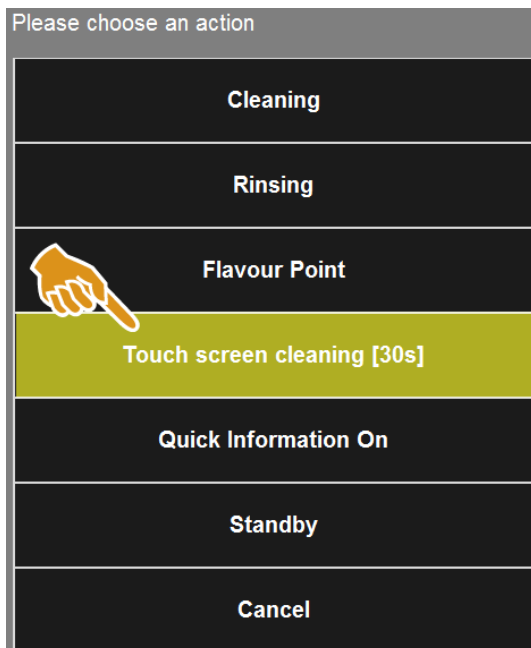
The information on the OS software versions are listed in the "Information" main menu.




Necessary selection in the main menu:
[Information]

Touch screen cleaning function

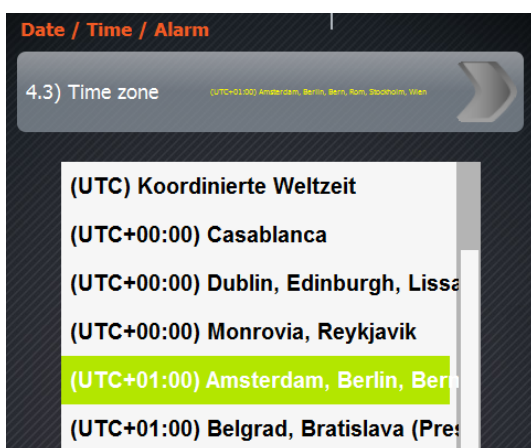
The cleaning function in the service menu deactivates the touch screen (touch-sensitive surface) for 30 seconds. Then a countdown is automatically shown in the display.



Necessary selection in the service menu  :
[Touch screen cleaning]

Times zones

The selection of a time zone allows for automatic switching between daylight savings time/standard time and vice versa.



Necessary selection in the menu:
Configuration > Date/Time/Alarm > [Time zones]
Features:

- "Coordinated Universal Time" (UTC) corresponds to "Central European Time" (CET) by adding an hour for standard time. Or 2 hours during daylight savings time.
- Worldwide time specifications of machines with telemetry systems are easy to monitor and manage.

Note:
(CET) Central European Time

Software adaptations

Translations of software texts

The software texts have been revised in general.

Additional languages

Simplified Chinese (zh-cn) has been added to the language packet.

Russian (русский)

Simplified Chinese(中文)

Spanish (Español)

Swedish (Svenska)

Traditional Chinese (中文)

الإجليزية

Necessary selection in the menu:

Configuration > [Language]

Features:

- Chinese is generally broken down into:
 - > zh-cn = Simplified Chinese (simpler characters)
 - > zh-tw = Traditional Chinese (more detailed characters)
- Simplified Chinese and Traditional Chinese are distinguishing features for the character of the language and not a dialect or accent.

Note:

Converting the language to Chinese or Arabic characters requires increased attention. Users without knowledge of the characters can easily become disoriented within the menu.



Machines with button operation and 2-line display need a specially designed 2-line display for zh-cn or zu-tw to show both sets of Chinese characters.

Arabic characters can only be displayed on the touch screen.

Software troubleshooting

Steam boiler rinse

The configuration of the steam boiler rinsing procedure has been set to [weekly] during the initial setting or a master reset. The configuration is now adopted with an update.

ECO-MODE

The "Eco mode" process function for reducing the boiler temperature has been fixed. The period of time until activation of a reduction of the boiler temperature has also been adjusted.

The process with active "Eco mode" is new as follows:

1. 2 hours since the last dispensing of a beverage is the period of time until activation of Eco mode. (was previously 20 min.)
2. The first 25% reduction in the boiler temperature is then executed.
3. In a following 30 minute interval, another 25% reduction is executed (as previously), provided no beverage is dispensed.
4. The reduction in the boiler temperature is then continued until 40 °C is reached.

Twin Choco

The "Twin Choco" function now works correctly.

The "Twin Choco" powder system has two different Choco powder types.

Necessary selection in the menu:

- System > System parameters > Powder system > [2x Choco powder]
- Configuration > Beverage setting > Individual beverage setting > Choco settings > [Choco dispenser]
 - > (left/right) Double beverage setting [2x]
- Configuration > Beverage setting > Individual beverage setting > Choco settings > [Choco powder quantity left/right]

(EN) This page is intentionally left blank.

(DE) Diese Seite wurde absichtlich frei gelassen.

(FR) Cette page est laissée vide intentionnellement.

(ES) Esta página se ha dejado en blanco intencionalmente