

T.I. no.: 2022-06 Updated: -	Topic: SCA BF Software 2.13
---	------------------------------------

Date: 01.03.2022	Priority	Handlungsbedarf
Affected machines: SCA P BF	High	As soon as possible
From serial number:	Medium	X On next visit to the machine
Ab Datum: Immediately	X Low	FYI only

IMPROVEMENTS

Software bug fixes

With the **software version 2.13**, the following errors have been eliminated.

- The function of „Restore Master Settings“ (Master Reset) is restored.
- When the payment system is deactivated by the free vending mode, the dispensing of free drinks is possible.
- Terminology correction made in the display text „Proportional steam valve“. New „Steam valve“.
- The irregular error message „Timeout heating steam boiler“ does no longer occur.
- Free drinks can be purchased in MDB mode without a card.
- When the parameter „Motor automatic drink dispenser“ was deactivated cold milk was dispensed incorrectly. The malfunction has been corrected.
- The communication between the combi board 073528 and the CPU has been improved.

New features & further developments

- Parameter „Eco rinse“ implemented.



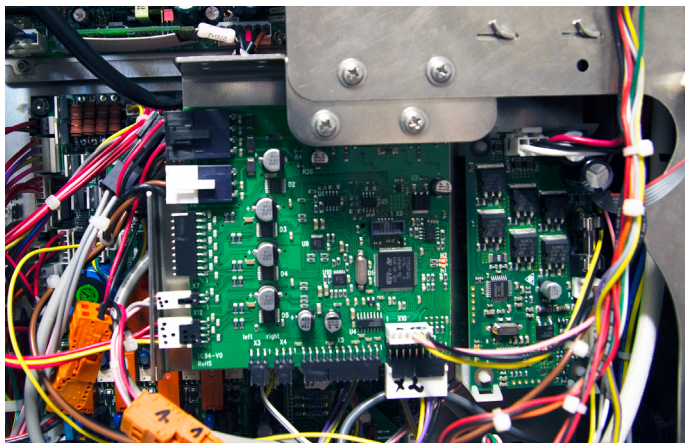
Eco rinse

The new "Eco rinse" function reduces milk consumption during repetitive rinsing of the milk lines.

With an active eco rinse, the lines are left with water at the end of the rinse. Before a beverage is dispensed, the lines are filled with milk.

SOFTWARE UPDATE EXECUTE

With the new machine software V2.13, an update of the combi board 073528 as well as the CPU becomes necessary.



Prerequisite



Cable for software update (length 1.80 m)

Article number: 065533

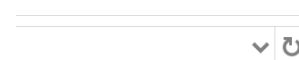


Recommended adapter USB to Serial

Article number: 068759

Prerequisite

- ▶ Make a backup of the existing machine software.
- ▶ Unpack the software and place it in the root directory of a USB 2.0 stick.
 - > Do not change the folder structure (Autostart, KombiPrint ...).
- ▶ Install the HEX Load Tool on the PC.
- ▶ Check the communication parameter "USB-Serial Port" in the device manager and make the following setting.
 - > Baud rate = 115200 Bd (bits per second)
 - > ComPort = Com1-6, do not set to .Auto'



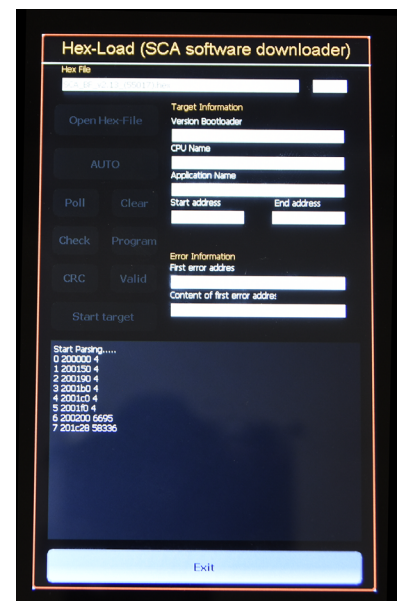
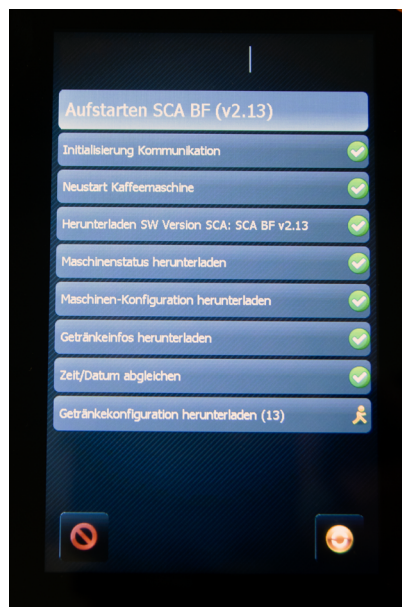
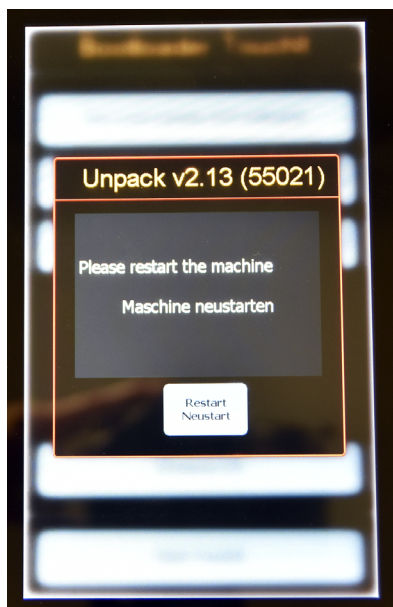
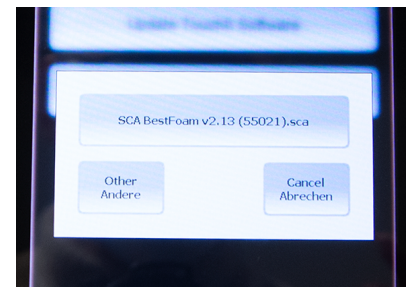
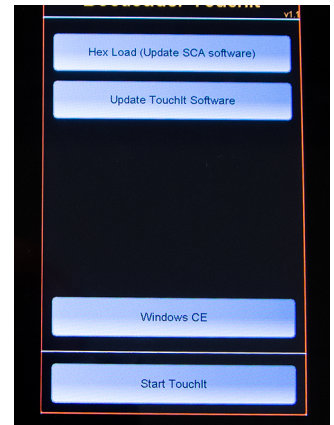
Name

- ▶ Autostart
- ▶ Kombiprint
- ▶ Schaeerer
- ▶ Update.bat

Durchführung

- ▶ Start the software update V2.13 via USB 2.0 interface on the machine.
 - > Insert the USB stick with the software update into the USB port of the coffee machine.
 - > Switch on the coffee machine; the TouchIT boot loader starts automatically from the USB stick.

 - ▶ Update CPU by means of HEX/SCA file.
 - > Select the software <SCA BestFoam v2.13 (55021).sca> via the field [HEX Load (Update SCA Software)].
 - > The update is carried out.
 - > A prompt appears asking whether previous settings should be adopted.
 - > Remove the USB stick after the installation.
 - > The coffee machine must be restarted.
- The CPU has been updated.



- Update the firmware of combi board 073528.
 - > Establish data communication between the PC and the coffee machine.



1. Switch off the coffee machine.
2. Connect the PC to the coffee machine.
A serial cable with the USB adapter must be used for this purpose.
3. Switch on the coffee machine.

Advice: Before loading the HEX file, check the [Target] (start HEX Load before) whether the connection between PC and combination board has been established. The parameters in the [Target] appear "blue" and the BTL S/W version (Boot-loader) is set to V1.00.

4. Start HEX Load Tool on the PC.
5. Load the new HEX file into the HEX Load tool.
6. Transfer the file to the combi board by pressing function key [F9] (auto).

Communication is established via the boot loader and data transmission is started. After successful data transfer, the technical data of the board is listed in an overview in the HEX Load Tool.

Installation procedure

A

B

C

D

E

Area	Adr.	Len.	Gap	Data
0001	08002000	00005DA0		58 60 00 20 49 52 00 08 19 4E 00 08 1B 4E

File	Target
Range:	8002000 - 8007D9F
CRC	F555
Number of bytes:	23968
Number of data areas:	1
Number of records:	1498
Range(s)	8002000 - 801FFFF
CRC	0000
Application	BTL_KOMBI
CPU	STM32F101VC
BTL S/W Version	BTL V1.00

Further information

A detailed description of CPU programming can be found in Technical Information TI-012 (2009).

Schaerer Coffee Link: [\[CPU\] Programming update 2009](#)

SERVICE CONTACT

Global Technical Support Team

GBU Professional Coffee Machines

- > Support Hotline: +41 32 681 62 75 (10:00-11:30 CET/ 15:00-16:30 CET)
- > Support E-Mail: technical-support@schaerer.com