

T.I. no.: 2022-13 Updated:	Topic: SCS SOUL Software V4.36.12
---	--

Date: 24.05.2022	Priority	Need for action
Affected machines: SCS / SOUL	High	As soon as possible
From serial number: -	x Medium	x On next visit to the machine
As of date: immediately	Low	FYI only

INFORMATION ON SOFTWARE-UPDATE

The new software update V4.36.12 eliminates bugs, optimises the platform software and replaces the software version V4.34.7.

Overview Features

- Validation check / Automatic monitoring of the pressure sensor
- Improved cleaning process of the coffee system
- User-defined designations through direct translation
- Change of machine behavior when opening the control panel

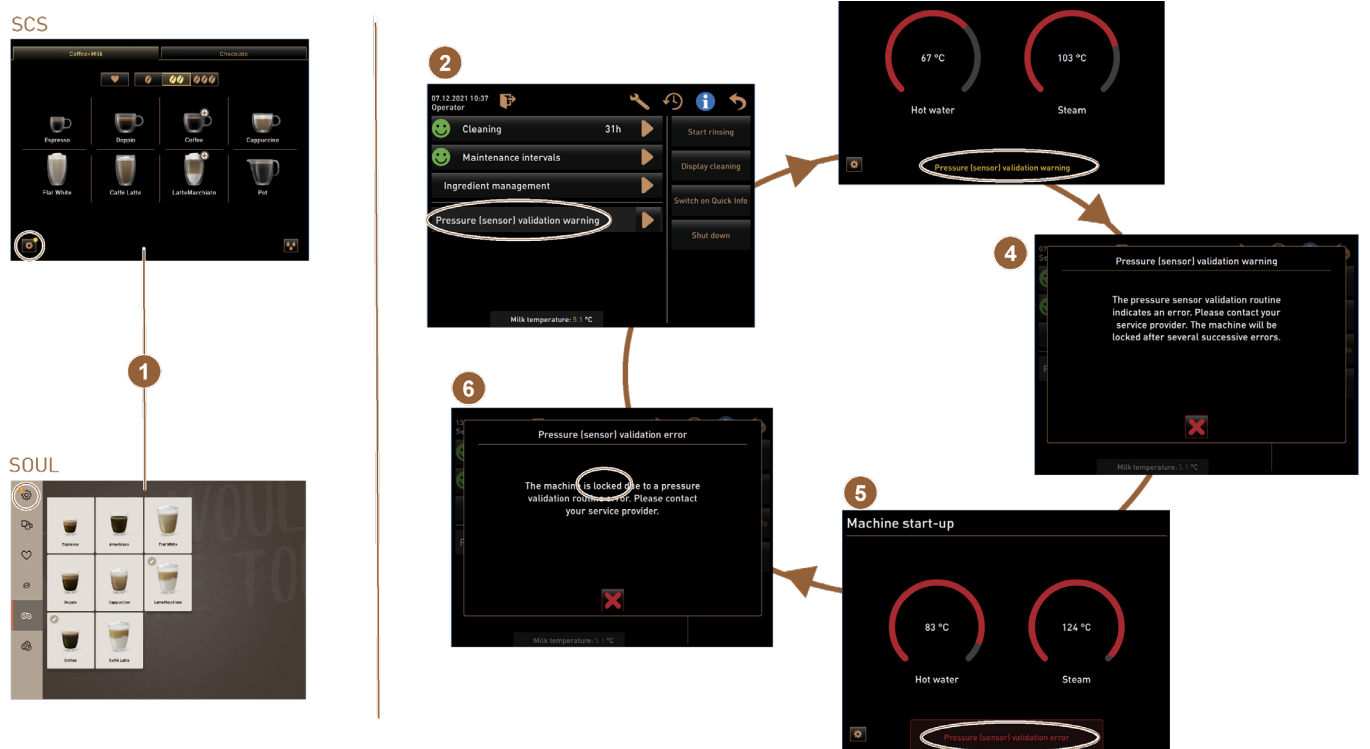
Validation / Automatic monitoring of the pressure sensor

With software release V4.36.12, an automatic process sequence has been integrated that subjects the pressure sensor to a function check (control) every time the machine is started.

The machine is put into a monitoring mode as soon as an error is detected and then checks whether the error occurs regularly. For safety reasons, the machine is blocked.

> Further information in TI 2022-08 of 10.03.2022

Visualization of the routine



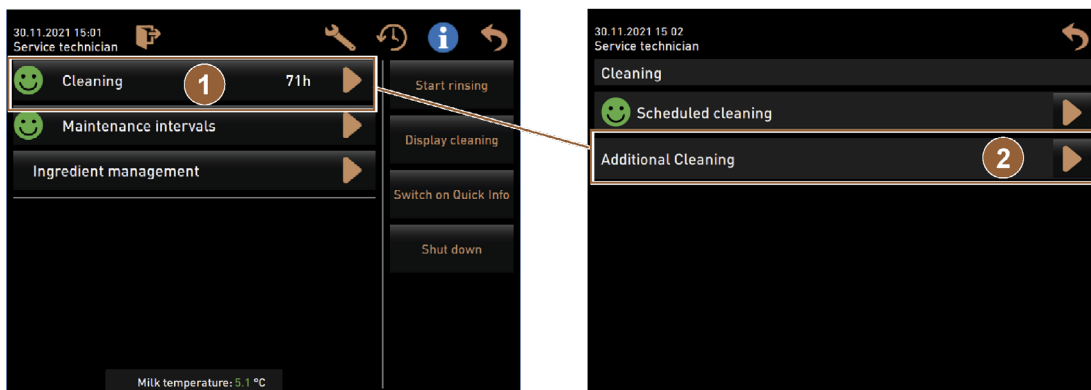
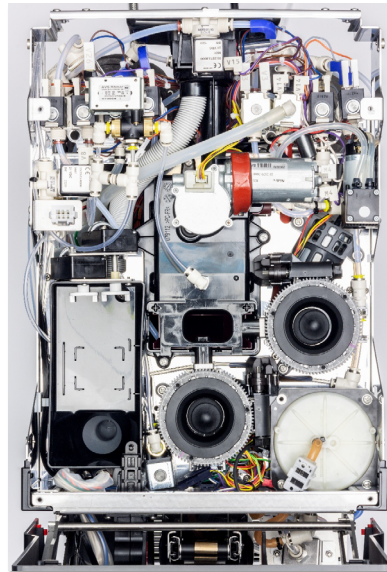
Improved cleaning process of the coffee system

After long-term investigations, an substantially improved cleaning process for the coffee system was developed.

The new cleaning process was tested in long-term and extensive field tests in several countries and subjected to various hygiene verification tests.

Characteristics

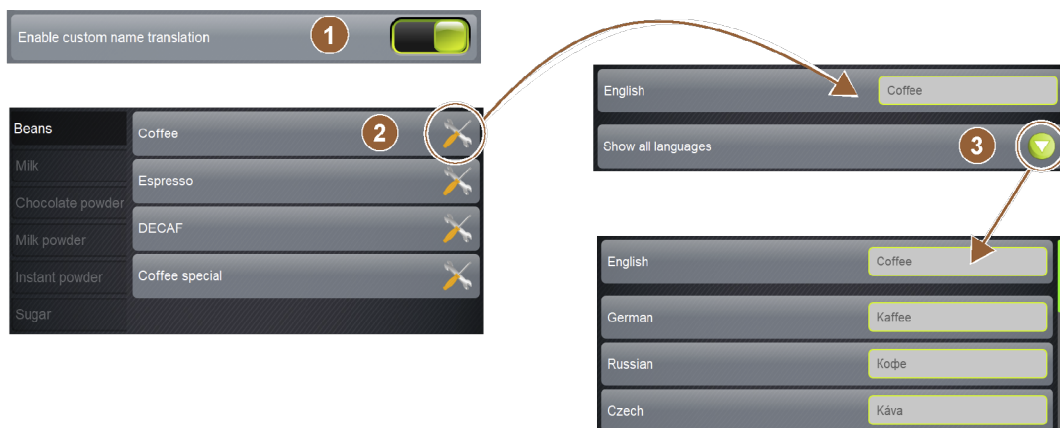
- **Optimised use** of the available cleaning agent (cleaning tablet 065'221).
 - > tablet dissolves in stages by adding a tightly controlled amount of water.
 - > high cleaning agent concentration is used for the various phases of the cleaning process.
- **Optimum use** of time and cleaning water temperature combined with the aforementioned high concentration of cleaning agent solution.
- A minor increase in the total cleaning time: + ≈ 3.5 minutes.
- A more efficient use of water (especially important while using tanks): ≈25%.
- **Optimised cleaning** of the 'Hot & Cold' reverse-flow cooling system.
- **Improved regeneration** of the steam boiler after the 'steam boiler rinsing' process [process is optional].



User-defined designations through direct translation

The menu "Ingredients" is shown as an example. Similar direct translation options are possible in the following menus.

- Naming of the cup sizes
- Beverage recipe
- Menu card
- Menükarte



Change of machine behavior when opening the control panel

From software 4.36.12 the machine behaviour changed when opening the panel during dispensing of powder-based ingredients.

Characteristics

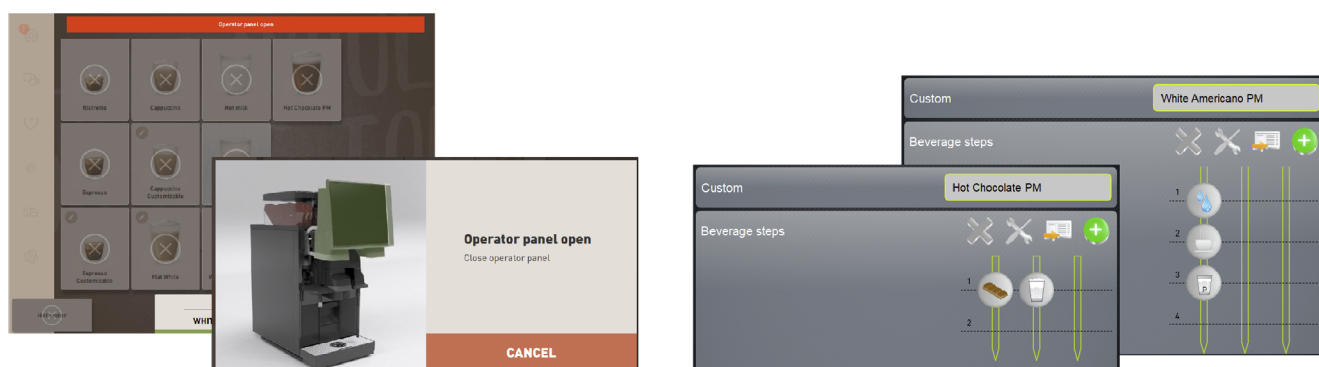
The dispensing of an ongoing powder-based recipe step is interrupted immediately and will continue as soon as the panel is closed.

The dispensing of other ingredients (i.e. additional water, coffee, milk) will stop if the recipe step was not started before the panel's opening and will start as soon as the panel is closed.

Depending on when the panel open action occurs an error or an animation will be shown.

The description is valid for both serial and parallel dispensed recipes.

- Serial example: additional water, coffee, milk powder (all recipe steps have the same water source)
- Parallel example: chocolate with milk foam based on 'fresh milk'.



Information

Further information can be found in the SCS/SOUL training documentation from Technical Support. This can be downloaded from the <Schaerer Coffee Link> portal in the Media Pool.

Service Contact

Global Technical Support Team

GBU Professional Coffee Machines

- > Support Hotline: +41 32 681 62 75 (10:00-11:30 CET/ 15:00-16:30 CET)
- > Support E-Mail: technical-support@schaerer.com