

<b>T.I. no.:</b> 2023-03 <b>Updated:</b> -	<b>Topic:</b> Product-Optimisation valve block
---	--

<b>Date:</b> 25.01.2023	<b>Priority</b>	<b>Need for action</b>
<b>Affected machines:</b> SCS/SOUL	High	As soon as possible
<b>From serial number:</b> -	Medium	On next visit to the machine
<b>As of date:</b> Immediately	X Low	X FYI only

## GENERAL

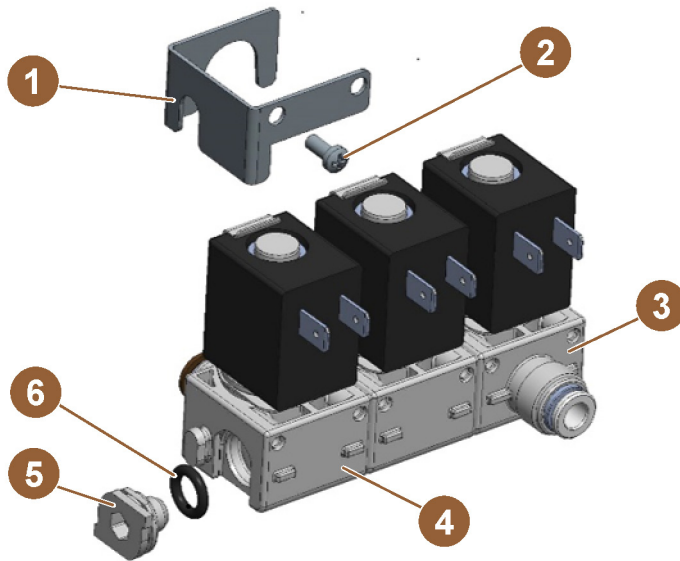
We received isolated feedback concerning malfunctioning of the end cap (33.2641.5000) of the valve assembly.

### Rejected Solution

Modification of the design

- Impossible to realize while keeping the valves interchangeable. This would result in a new version of the valve and double stock keeping for the service organisation.
- Long development time (design / test / tool change > minimum 6-9 months).

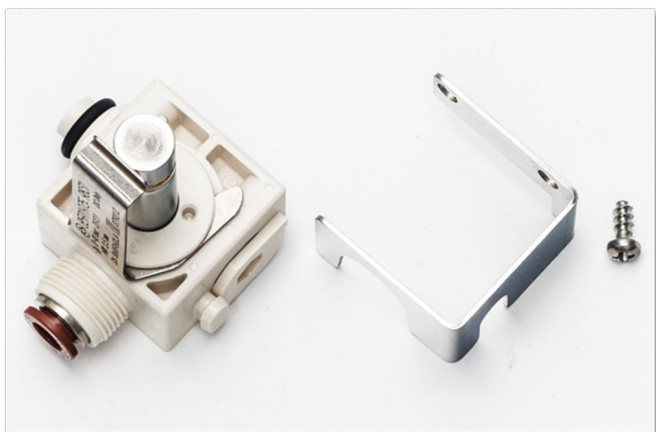
### Retrofittable Solution



Pos.-No.	Item number
1	100.869
2	00.0047.3651
3	079.211
4	079.212
5	33.2641.5000
6	33.4004.2000

- Metal bracket 100.869 + screw 00.0047.3651 (Phillips)
- Mounted in production from 12.05.2022 onwards.
- The solution has been successfully tested with a pressure exceeding 20 bar.

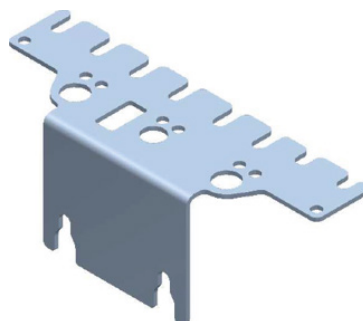
## Application example



### Valve mounting bracket (from production ±2018 CW30)

Use of this solution is possible from production ±2018 CW30; the machine must be equipped with the valve mounting bracket (right).

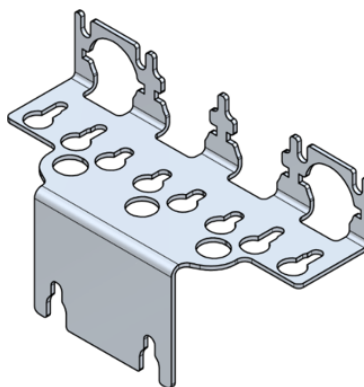
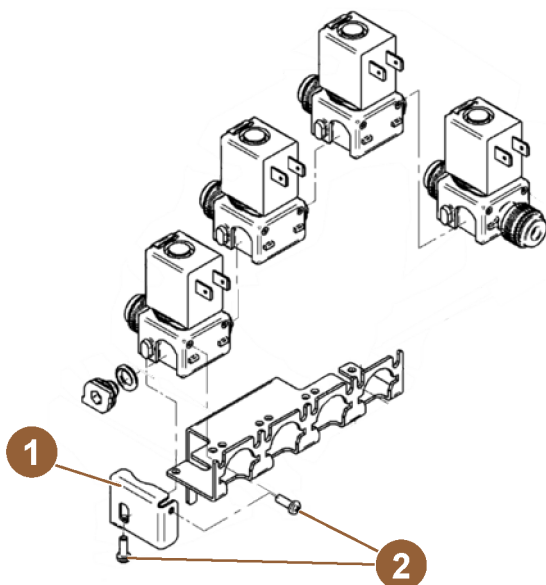
Bracket 100.869 (+ screw 00.0047.3651) can be used when the valve assembly is mounted on this bracket.



### Valve mounting bracket (before production ±2018 CW30)

The following part numbers are required for the modification:

- 33.4335.4000 Bracket
- 00.0047.3675 Screw (PT 35x10) x 2 pcs



Bracket & Screws must be used when the valve assembly is mounted on this bracket.

Pos.-No.	Item number
1	33.4335.4000
2	00.0047.3675

### Retrofit in the field

The valves must be positioned at the left-hand side of the valve fixation bracket (otherwise it is not possible to mount 33.4335.4000). Due to the age of the machines the modification is not free of charge.

## Retrofit in the field

Retrofit is recommended during the next preventive maintenance visit.

Parts can be ordered free of charge through your regular contacts based on the machine number(s) ) until May 31st, 2023.

### Service Contact

#### Global Technical Support Team

GBU Professional Coffee Machines

- > Support Hotline: +41 32 681 62 75 (10:00-11:30 CET/ 15:00-16:30 CET)
- > Support E-Mail: [technical-support@schaerer.com](mailto:technical-support@schaerer.com)