

T.I. no.: 2024-01 Updated: -	Topic: Replacing the hose fitting of the mixing cup
---------------------------------	---

Date: 09/02/2024
Affected machines: SOUL 10/12
From serial number: 2340XXXXXX
Start date: immediately

Priority and need for action	
<input type="checkbox"/>	High: as soon as possible
<input type="checkbox"/>	Medium: on next visit to the machine
<input checked="" type="checkbox"/>	Low: FYI only

## DESCRIPTION OF THE PROBLEM

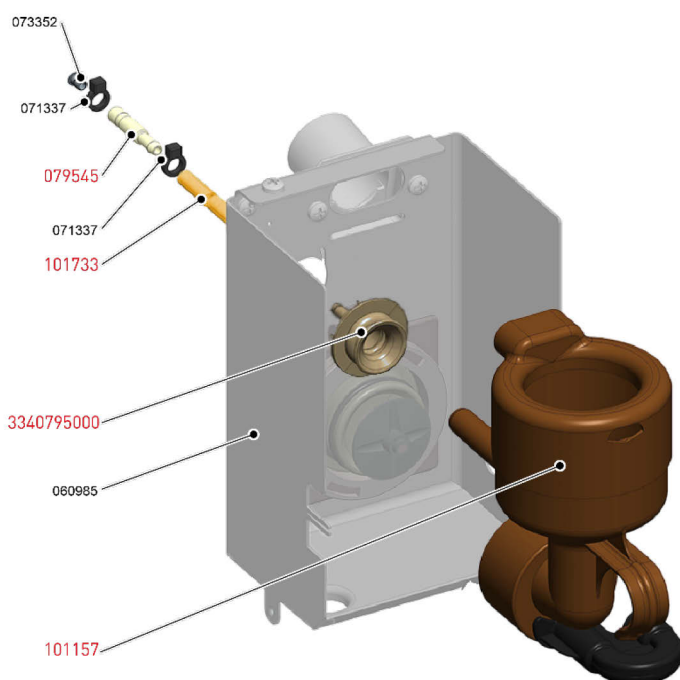
### New mixing cup with new hose fitting needs new hosing.

The mixing cup of the powder system (079283) has been replaced by a new version (101157) due to a necessary material change. Although the new mixing cup would fit into the old connection, the **complete hose fitting** should also be changed in older machines. This means that an old seal with possible wear in the connection piece cannot lead to leakage. The hose fitting does not necessarily have to be changed if the existing one has only been in use for a few months.

The new **complete hose fitting** (33.4079.5000) has a different hose fitting. It requires a smaller hose diameter than the previous one (4/8 mm instead of 5/8 mm).

When replacing the **complete hose fitting**, a new hose (101733, length 250 mm) must be installed with a new plug-in socket (079545) for this reason.

Installation situation	Replacement parts
------------------------	-------------------



079545	Plug-in socket I 6-5.1 PPSU
101733	Hose 4/8 silicone orange 250 mm
3340795000	Cpl. hose fitting
101157	Cpl. mixing cup

Figure 1: Mixing cup with complete hose fitting and hosing

### Degree of difficulty

The mixing cup can be easily replaced in the Soul 10/12.

The hose fitting must be replaced by a trained service employee.

## RECOMMENDED ACTION

If a visit is made to one of the affected machines built before CW40/2023:

- ▶ Check the condition of the hose fitting.
- ▶ If its seal needs to be replaced, replace the **complete hose fitting**.
- ▶ Then insert the mixing cup.

## REPAIR NOTES

- ▶ Make sure proper repair is carried out with suitable tools.  
Instead of a pre-assembled hose section (101733), piece goods (100718) can also be shortened to 250 mm.
- ▶ Use a suitable (professional) tool, a hose cutter, to cut the hose piece without damaging it.

## Material return

- ▶ Material return is not intended.
- ▶ Dispose of the used parts in line with regulations.

## More information

For more information on the affected machines, contact **Technical Support**:

## Service contact

Global Technical Support Team

GBU Professional Coffee Machines

- > Support hotline: +41 32 681 62 75 (10:00-11:30 a.m. CET/ 3:00-4:30 p.m. CET)
- > Support e-mail: [technical-support@schaerer.com](mailto:technical-support@schaerer.com)