

T.I. no.: 2024-14 Updated: -	Topic: Installation position of descaling valve V19 rotated by 180°
---------------------------------	---

Date: 18.11.2024
Affected machines: SOUL
Up to serial number: 2435xxxxxx
Start date: immediately

Priority and need for action	
<input type="checkbox"/>	High: as soon as possible
<input checked="" type="checkbox"/>	Medium: on next visit to the machine
<input type="checkbox"/>	Low: FYI only

DESCRIPTION AND SOLUTION OF PROBLEM

Rotation of descaling valve V19 by 180° (Uptime system)

In-house tests and analyses have shown that descaling valve V19 triggers irregular water flow in some machines. To prevent this from happening, the installation position of descaling valve V19 has been rotated by 180°. This ensures that the water pressure system is optimised, and the water flow constant.

Current installation position of descaling valve V19	Overview of V19 and valve connections
--	---------------------------------------

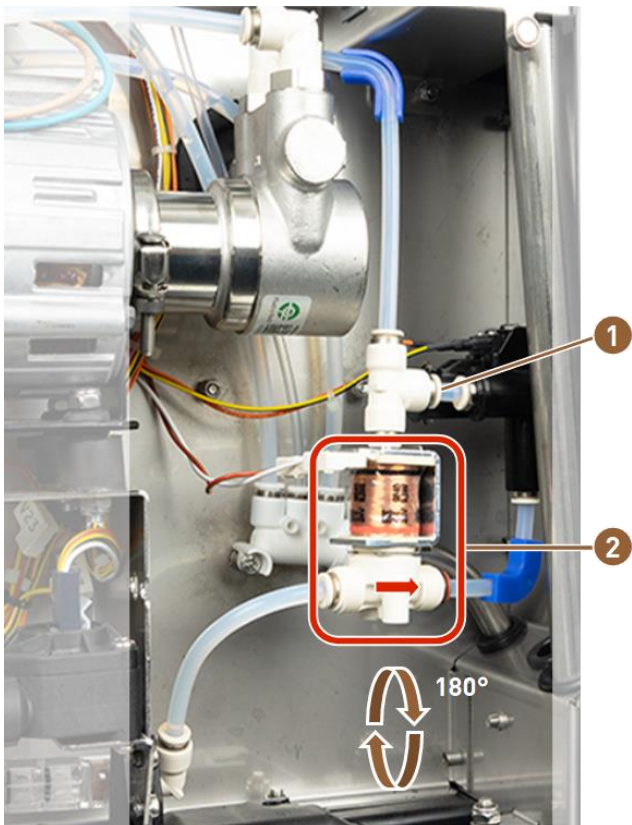


Figure 1: Descaling valve V19 in the original installation position

- 1** Plug-in T connection
 - 2** Descaling valve V19
1. Disassemble the hoses from the V19 **(2)** and release the plug-in T connection **(1)** from the V19. Rotate the plug-in connection T by 90°.
 2. Rotate descaling valve V19 **(2)** by 180°.
 3. Attach the centre connection of the plug-in T connection **(1)** to the V19 **(2)**.

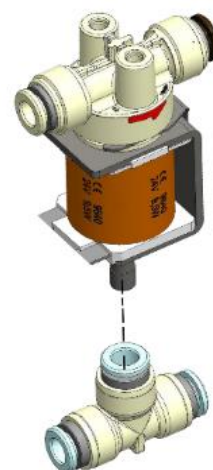


Figure 2: Attach plug-in T connection to V19

Descaling valve V19 is rotated by 180°

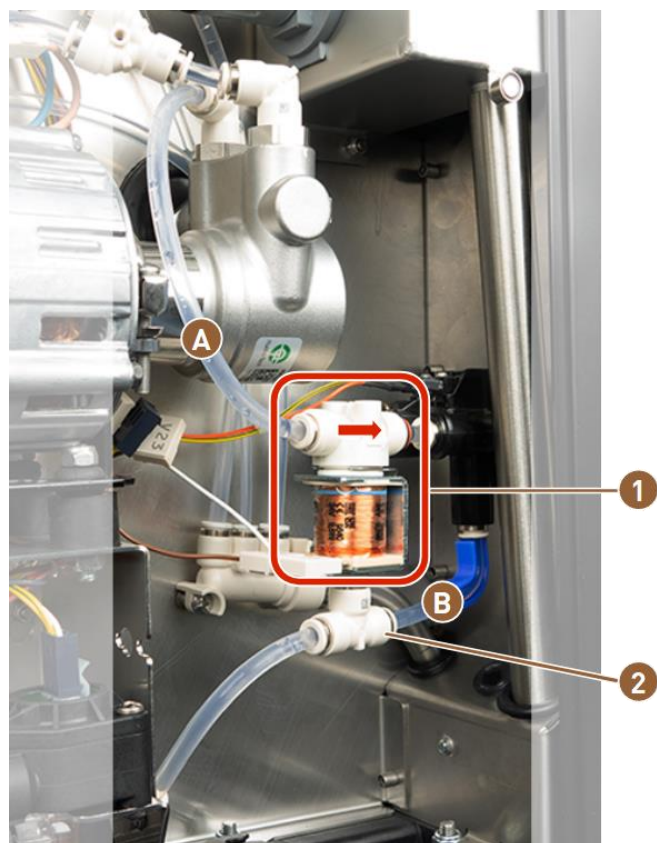


Figure 3: Installation position of descaling valve V19 rotated by 180°

Overview of V19 and valve connections

- 1 Descaling valve V19
 - 2 Plug-in connection T
4. Replace the hoses **[A+B]** with the specified lengths and connect them like in the image:
- A** Replace hosing 140 mm with: Hose 4/6 PFA 200 mm (#33.7067.760)
 - B** Replace hosing 95 mm with: Hose 4/6PFA 100 mm, (#33.7067.760) with hose guide (hose remaining from **A**).

NOTE

Do not mix up the valve connections by mistake. Note the installation direction.

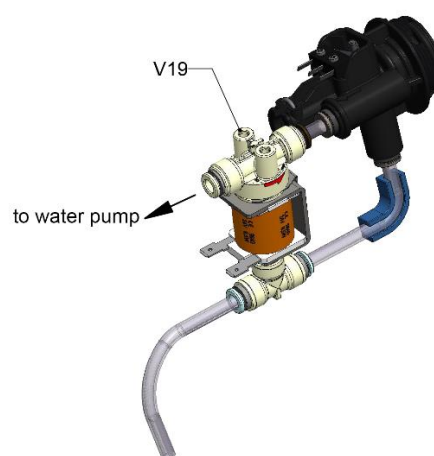


Figure 4: Installation position of descaling valve V19 rotated by 180°

TOOL

- ▶ Use a suitable tool, a hose cutter, to cut the hose piece without damaging it.

RECOMMENDED ACTION

If visiting one of the affected machines.

Valve V19 must be moved to the new installation position by a trained service employee.

- ▶ Rotate descaling valve V19 by 180°.
- ▶ Perform a function test.

From machine serial number

Machine type: Schaerer Coffee Soul

For machines in the field from the manufacturer date of approx. calendar week 35/2024, descaling valve V19 is rotated by 180°.

More information

For more information on the affected machines, contact **Technical Support**: