


<b>T.I. no.:</b> 2024-17 <b>Updated:</b> -	<b>Topic:</b> New spare part: LED strip
---	---

<b>Date:</b> 12/10/2024	<b>Priority and need for action</b>
<b>Affected machines:</b> SOUL 10/12	
<b>From serial number:</b> -	
<b>From date:</b> right away	<input type="checkbox"/> High: as soon as possible <input type="checkbox"/> Medium: on next visit to the machine <input checked="" type="checkbox"/> Low: FYI only

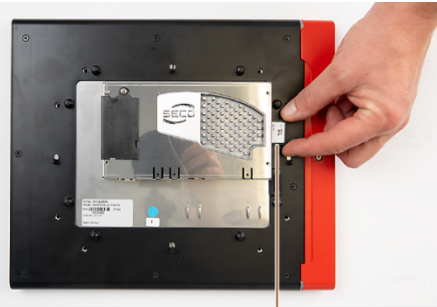
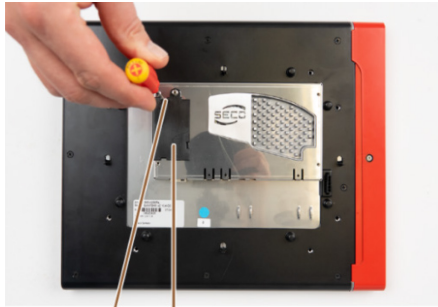

## DESCRIPTION

A new LED strip with article no. **3370101781** is available as a spare part for the touch screen of the SOUL 10/12 machine. Previously, only the complete touch screen was available as a spare part. If the LED strip is defective, it will no longer be necessary to replace the entire touch screen in the future.

## Replaying display LED strip

	<b>NOTE</b>
	<p><b>Property damage due to electrostatic discharge</b></p> <p>Improper handling of electrical devices can result in electrostatic discharge that can damage the component.</p> <ul style="list-style-type: none"> <li>▶ Make sure that all activities are only carried out by qualified staff.</li> <li>▶ Use an anti-static wristband.</li> <li>▶ Use an anti-static protective work mat.</li> </ul>

### Removing memory card      Removing interface board cover

 <p><b>1</b></p>	 <p><b>2</b>   <b>3</b></p>	 <p><b>4</b></p>
<p>▶ Remove the memory card <b>(1)</b>.</p>	<p>▶ Loosen the four screws from the interface board cover <b>(2)</b>.</p> <p>▶ Remove the cover <b>(3)</b>.</p>	<p>▶ The interface board cover has been removed <b>(4)</b>.</p>

**Unscrewing screws from housing    Unscrewing screw from decor element    Removing decor element**



5

- ▶ Unscrew the eight screws from the back of the touch screen housing (5).



6

- ▶ Unscrew the screw from the housing of the red decor element (6).



7

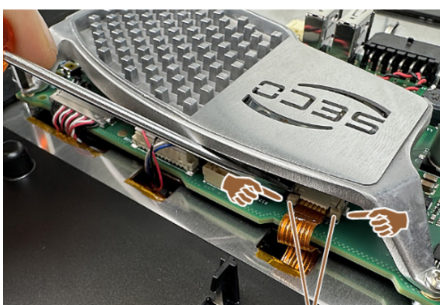
- ▶ Remove the red housing of the decor element (7). You have the option of using the service card as a tool. Carefully slide the edge of the service card under the decor element and carefully pull the service card along the decor element until it releases/snaps out.

**Removing rubber seal    Loosening ribbon cable from cable holder**



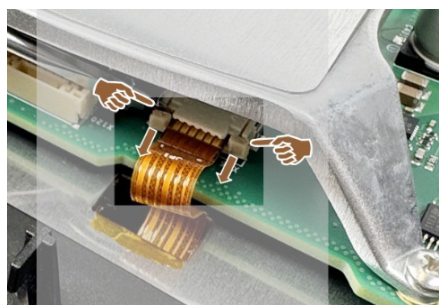
8

- ▶ Use a screwdriver to loosen the rubber seal (8) and remove it from the LED bar bracket.



9

- ▶ Loosen the ribbon cable from the cable holder by carefully pulling out the release on the left and right using a screwdriver (9).



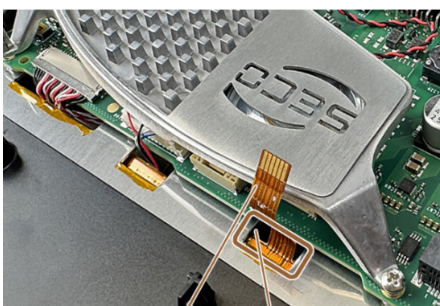
- ▶ The purpose of doing this is to make it possible to push out the LED bar with the LED strip. (Figure 12)

**Pulling ribbon cable out of cable holder    Opening touch screen housing**



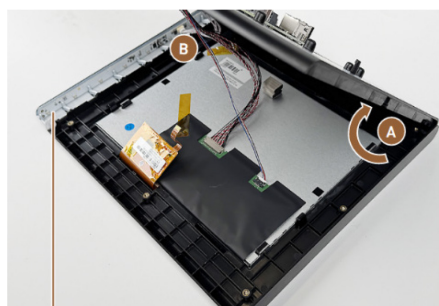
10

- ▶ Carefully pull the ribbon cable (10) straight out of the cable holder using the tweezers.



11

- ▶ Continue to carefully pull out the ribbon cable (11).
- ▶ The ribbon cable is pulled through the cable bushing when the touch screen housing is opened (12).



13

- ▶ Carefully open the touch screen housing (A).
- ▶ Pull the LED control cable from the connection (B).
- ▶ Slide the LED bar away from the housing (13).

## Removing LED strip



- ▶ Loosen the LED strip (14) with the screwdriver.



- ▶ Remove the LED strip (15) out of the LED bar.

## New spare parts



- ▶ New spare part, LED strip art. no. **3370101781**.

## Installing new LED strip

Reassemble the new LED strip in reverse order.

## Affected machines

### Machine type

Schaerer Coffee Soul 10 & 12

## RECOMMENDED ACTION

When visiting a machine.

- ▶ Replace the LED strip.
- ▶ Perform a function test.

### REPAIR NOTES

- ▶ Make sure that repairs are carried out professionally using suitable tools.
- ▶ Use screwdriver sizes PH1 and SL00.
- ▶ Observe the electrical safety guidelines.



## ORDER

LED strip **3370101781** and LED control cable **1340051918** can be ordered through your regular spare parts ordering channel using the machine serial number.