

T.I. no.: 2024-17 Updated: -	Topic: New spare part: LED strip
---	---

Date: 12/10/2024	Priority and need for action <input type="checkbox"/> High: as soon as possible <input type="checkbox"/> Medium: on next visit to the machine <input checked="" type="checkbox"/> Low: FYI only
Affected machines: SOUL 10/12	
From serial number: -	
From date: right away	


DESCRIPTION

A new LED strip with article no. **3370101781** is available as a spare part for the touch screen of the SOUL 10/12 machine. Previously, only the complete touch screen was available as a spare part. If the LED strip is defective, it will no longer be necessary to replace the entire touch screen in the future.

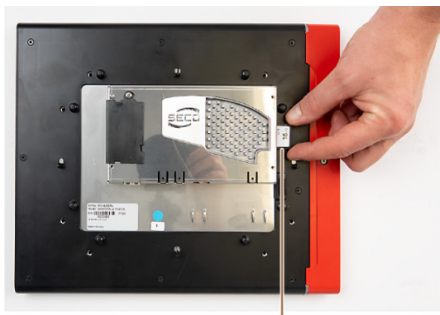
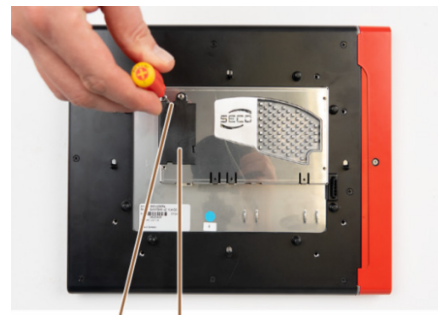
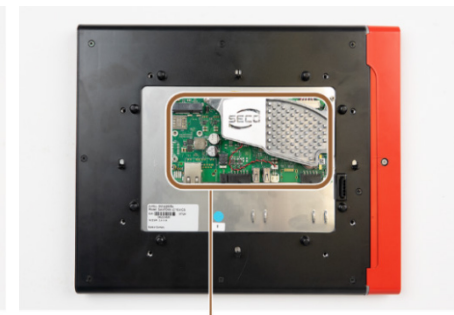
RECOMMENDATION

We recommend removing the touch screen in the field and installing the new LED strip in the workshop.

Replaying display LED strip

	NOTE
	<p>Property damage due to electrostatic discharge Improper handling of electrical devices can result in electrostatic discharge that can damage the component.</p> <ul style="list-style-type: none">▶ Make sure that all activities are only carried out by qualified staff.▶ Use an anti-static wristband.▶ Use an anti-static protective work mat.

Removing memory card Removing interface board cover

 1	 2 3	 4
▶ Remove the memory card (1) .	▶ Loosen the four screws from the interface board cover (2) . ▶ Remove the cover (3) .	▶ The interface board cover has been removed (4) .

Unscrewing screws from housing Unscrewing screw from decor element Removing decor element



5

▶ Unscrew the eight screws from the back of the touch screen housing (5).



6

▶ Unscrew the screw from the housing of the red decor element (6).



7

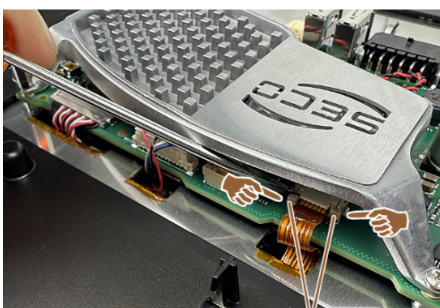
▶ Remove the red housing of the decor element (7). You have the option of using the service card as a tool. Carefully slide the edge of the service card under the decor element and carefully pull the service card along the decor element until it releases/snaps out.

Removing rubber seal Loosening ribbon cable from cable holder



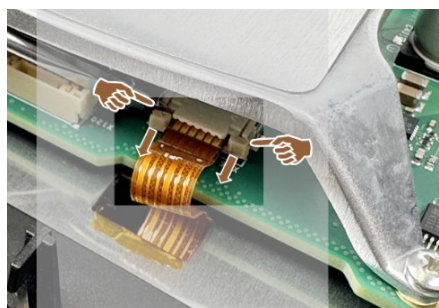
8

▶ Use a screwdriver to loosen the rubber seal (8) and remove it from the LED bar bracket.



9

▶ Loosen the ribbon cable from the cable holder by carefully pulling out the release on the left and right using a screwdriver (9).



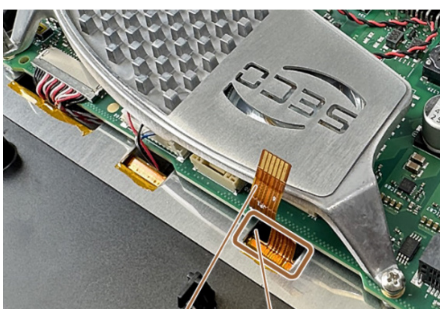
▶ The purpose of doing this is to make it possible to push out the LED bar with the LED strip. (Figure 12)

Pulling ribbon cable out of cable holder Opening touch screen housing



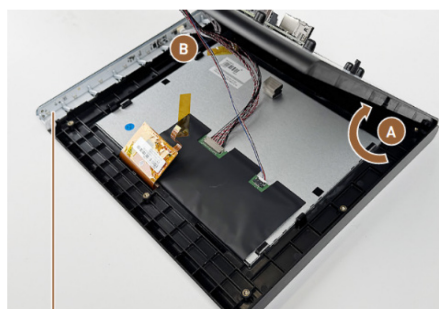
10

▶ Carefully pull the ribbon cable (10) straight out of the cable holder using the tweezers.



11

▶ Continue to carefully pull out the ribbon cable (11).
▶ The ribbon cable is pulled through the cable bushing when the touch screen housing is opened (12).



13

▶ Carefully open the touch screen housing (A).
▶ Pull the LED control cable from the connection (B).
▶ Slide the LED bar away from the housing (13).

Removing LED strip



14

- ▶ Loosen the LED strip (14) with the screwdriver.



15

- ▶ Remove the LED strip (15) out of the LED bar.

New spare parts



New spare part, LED strip art. no. **3370101781**.

Installing new LED strip

Reassemble the new LED strip in reverse order.

Affected machines

Machine type

Schaerer Coffee Soul 10 & 12

RECOMMENDED ACTION

When visiting a machine.

- ▶ Replace the LED strip.
- ▶ Perform a function test.

REPAIR NOTES

- ▶ Make sure that repairs are carried out professionally using suitable tools.
- ▶ Use screwdriver sizes PH1 and SL00.
- ▶ Observe the electrical safety guidelines.



ORDER

LED strip **3370101781** and LED control cable **1340051918** can be ordered through your regular spare parts ordering channel using the machine serial number.

Service contact

Global Technical Support Team

GBU Professional Coffee Machines

- > Support hotline: +41 32 681 62 75 (10:00-11:30 a.m. CET/3:00-4:30 p.m. CET)
- > Support e-mail: technical-support@schaerer.com