

T.I. no.: 2025-14 Updated: -	Topic: Plug-in safety valves
---	-------------------------------------

Date: 2025-11-03
Affected machines: SOUL 10/12
From production date: 09-24-2025
From date: right away

Priority and need for action	
<input type="checkbox"/>	High: as soon as possible
<input type="checkbox"/>	Medium: on next visit to the machine
<input checked="" type="checkbox"/>	Low: FYI only

NEW INSTALLATION OF SAFETY VALVES

The safety valves have been modified to facilitate installation. The safety valves are no longer fastened in place, but are now installed in plug-in form. The parts listed below are required to install the new safety valves. Machines with fastened safety valves do not need to be modified.

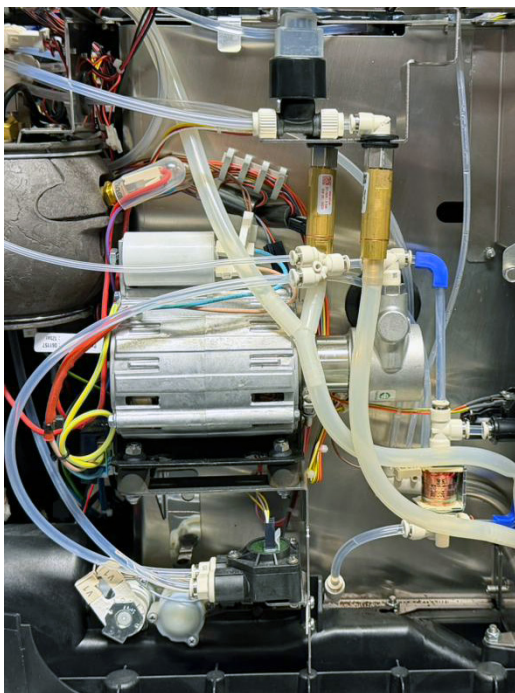


Figure 1: Installation of safety valve old

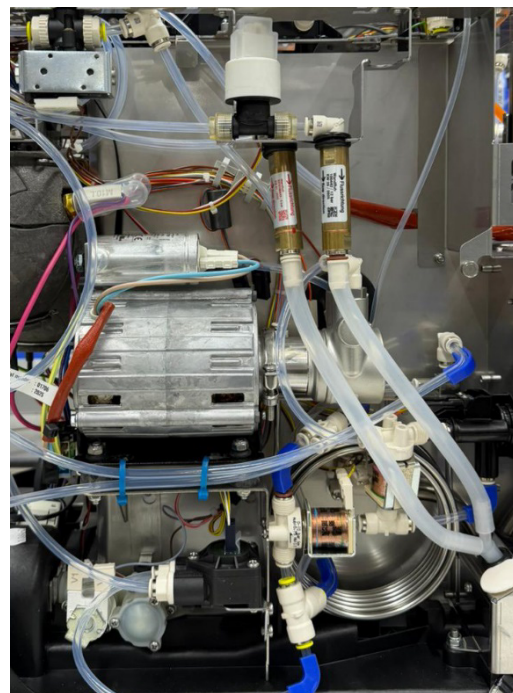


Figure 2: Installation of safety valve new

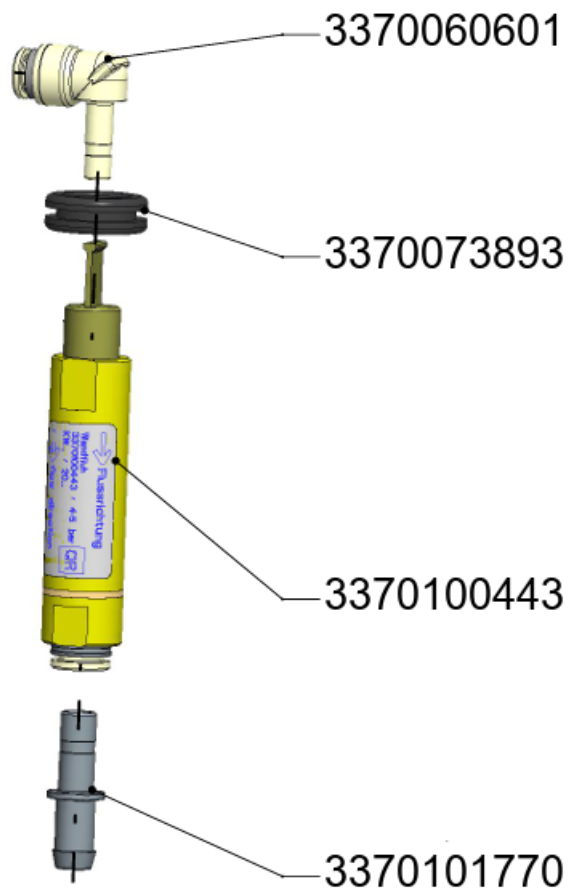


Figure 3: Required parts for the 5-bar safety valve

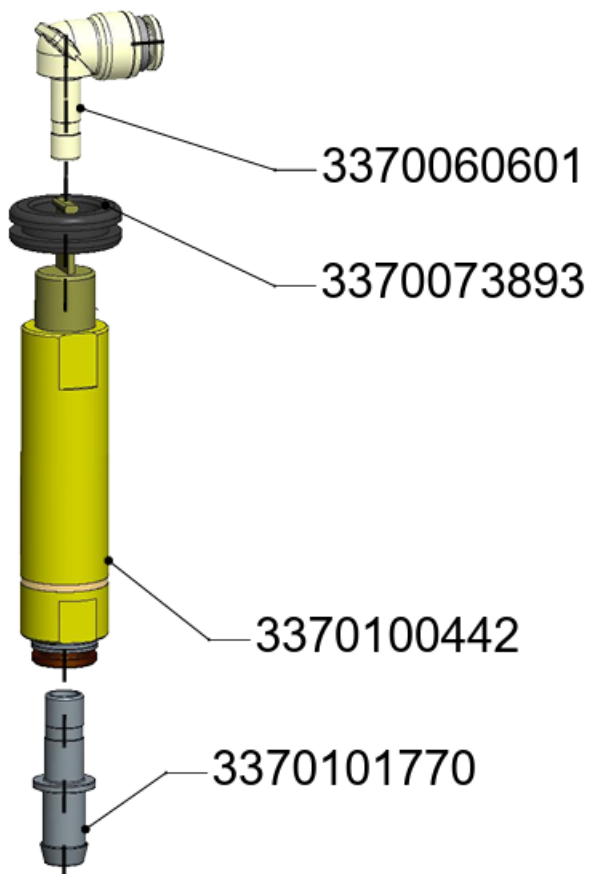


Figure 4: Required parts for the 12-bar safety valve

Machine type	From production date	To production date
Schaerer Coffee Soul	09-24-2025	

More information

For additional information on the affected machines, contact **Technical Support**:

Service contact

- Global Technical Support Team
- GBU Professional Coffee Machines
 - > Support hotline: +41 32 681 62 75 (10:00-11:30 a.m. CET/3:00-4:30 p.m. CET)
 - > Support e-mail: technical-support@schaerer.com