
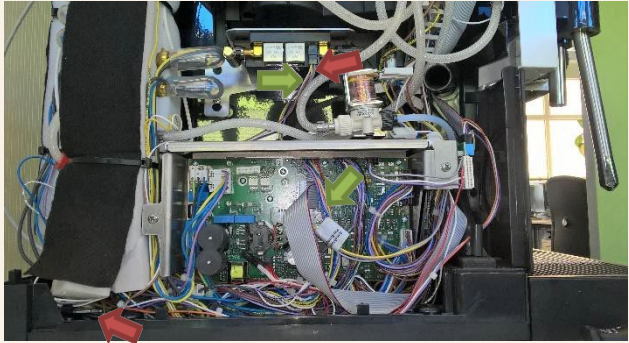


# SERVICE MEMO

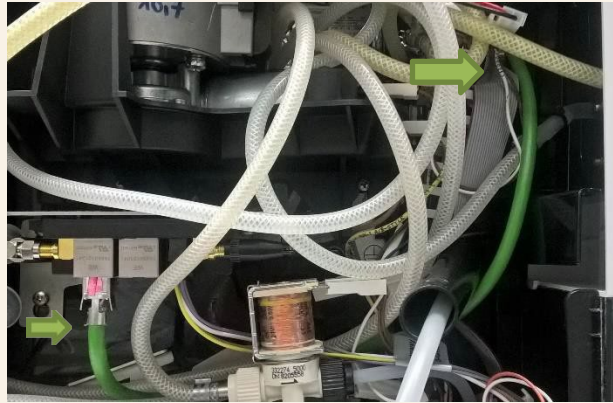
22-10-2024

Number: JDE 2024-09  
Dispenser(s): *Schaerer Coffee Club*  
Title: Schaerer Coffee Club Retrofit instruction telemetry

Below you will find a description how to install the modem in the Schaerer Coffee club:  
**55127440 retrofit kit gateway eu**

<p>The modem is installed on the left side, at the back. →</p> <p>Fix angle with two screws at the coffee machine. →</p> <p>Connection serial and power supply →</p> <p>Connection Ethernet <b>left</b> bushing</p>	
<p>Assembly situation and cable laying serial → and power supply. →</p>	

Cable laying Ethernet →



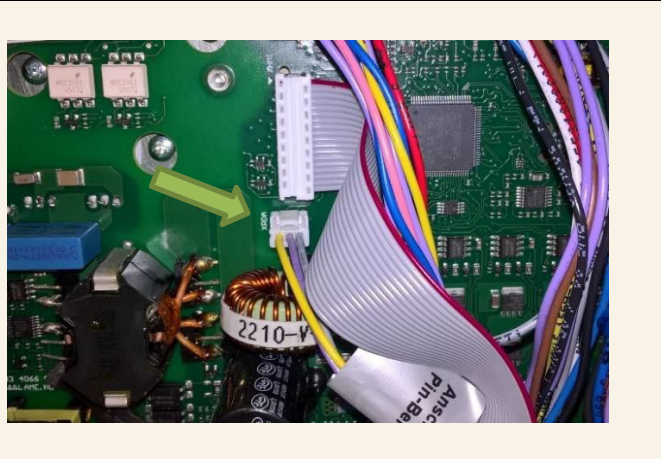
Guide Ethernet cable through rubber bushing... →



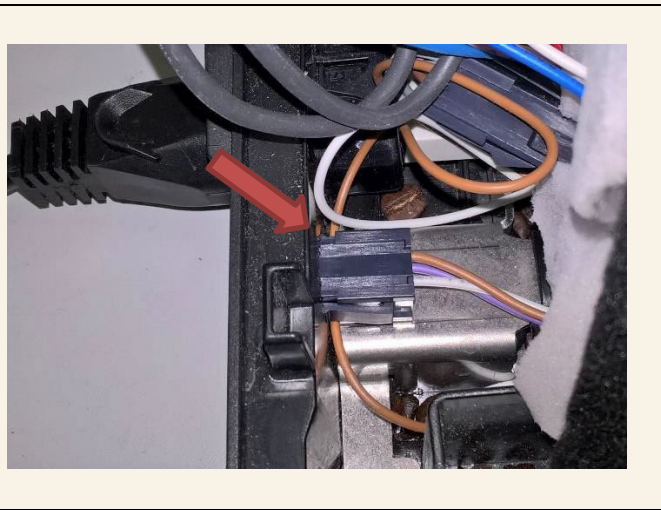
...and plug the Ethernet cable into front panel. →



The cable for serial connection is plugged onto the plug „XRDA“. →

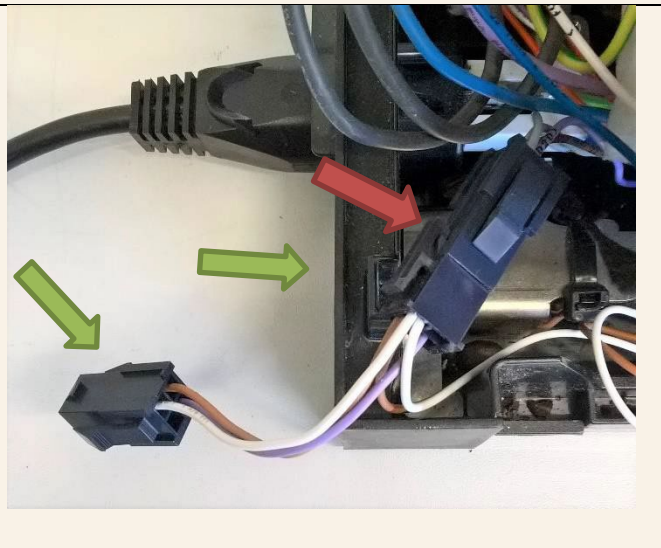


Remove plug of milk cooler empty sensor from housing... →



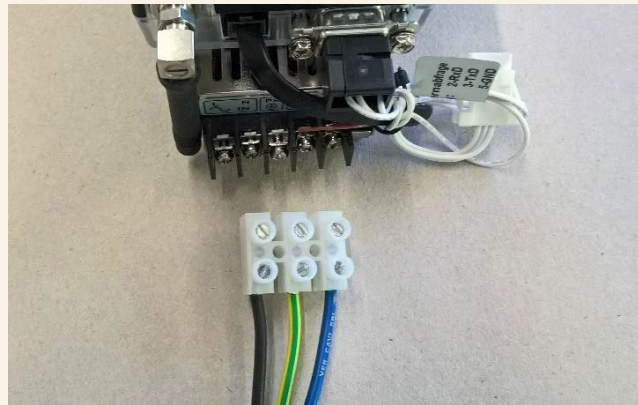
and plug the Y plug between plug of milk cooler empty sensor and housing. →

Fit Y plug at housing again (w/o illustration) →



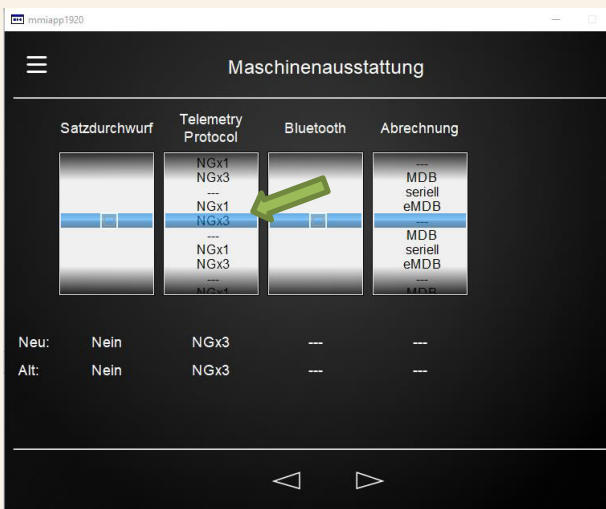
**Attention!**

If there is still an older modem with independent power supply installed in the machine, it needs to be dismantled and the power supply cable (230 V) needs to be secured (insulated) with a 3-pole luster terminal and must be fixed at the cable harness!

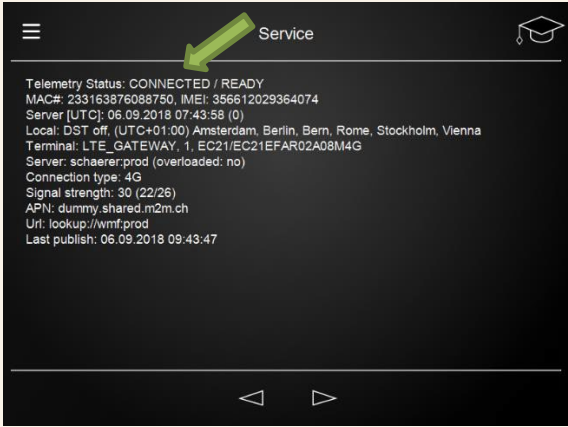
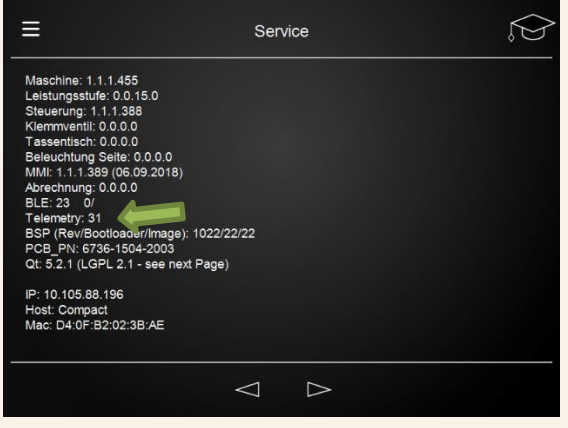


**SOFTWARE SETTINGS**

Set NGx3 in the machine settings:



**DISPLAY OF SYSTEM INFORMATION:**

<p><b>As of NGx3 the status is displayed at the coffee machine.</b></p> <p>Info -&gt; Service -&gt; browse until the following is displayed:</p> <p>If it says at „Telemetry Status:“ CONNECTED, modem is connected to server and retrofitting has been successful!</p>	
<p><b>NGx3 protocol version in „Telemetry“ (line 10)</b></p> <p>Info -&gt; Service -&gt; browse until the following is displayed:</p> <p>Under Telemetry the version of the NGx3 protocol is displayed. →</p>	

## Description of Information on Display

Parameter	Value(s)	Description
Modem link status:	* Connected Connecting None Idle Error	<b>Connected</b> - Modem is linked to GSM network and connected to InsideM2M server. <b>Connecting</b> - Modem tries to link with GSM network <b>None</b> - Stack not initialized (right after restart) <b>Idle</b> - Stack initialized <b>Error</b> - Error
Modem status:	Ready  Queue Full	<b>Ready</b> – Connection between PCM (CPU) and modem in order <b>Queue Full</b> - Modem not ready, because too much data has been sent by PCM („overflow“)
GMS connection status:	Roaming Idle Home network Searching Denied Unknown	<b>Roaming</b> – linked to GSM third party networks <b>Idle</b> - not registered (idle) <b>Home network</b> – linked to GSM home network <b>Searching</b> – not registered / searching for GSM network <b>Denied</b> – Registration in GSM network denied <b>Unknown</b> - Registration status unknown
GMS signal strength:	19 (Avg/Min/Max: 19/0/24)	
Server [UTC]:	20.04.2018 09:25:32	
Time diff:	2	
MCC:	262	
MNC:	2	
LAC:	8191	
CID:	53841	
ICCID:	cid	
APN:	internet.gdsp	
MAC#:	...	(Hardware-) number of modem
IMEI:	...	number of SIM card
Last pulish:	20.04.2018 10:25:05	
Url:	lookup://Schaerer.int	lookup://WMF.int, lookup://Schaerer.pro, lookup://WMF.pro

\* Connected = everything in order.